

PROJECT:
DR. BEN THORNTON
THORNTON ORTHODONTICS

LOCATION:
 2995 HILYARD STREET
 EUGENE, OR 97405

HENRY SCHEIN REP:
 DAVID SHEETS
REGION:
 OR-AK - OREGON
PHONE #:
 541.517.8676

-IMPORTANT NOTE-
 THIS DOCUMENT HAS BEEN PREPARED AS AN INSTRUMENT OF PROFESSIONAL SERVICE AND IS NOT AN ARCHITECTURAL PLAN. THE IDEAS/DESIGN INCLUDED HEREIN ARE THE SOLE PROPERTY OF HENRY SCHEIN, INC. AND ARE PROTECTED UNDER COPYRIGHT. THESE PLANS MAY NOT BE USED OR REPRODUCED WITHOUT EXPRESSED WRITTEN CONSENT OF HENRY SCHEIN, INC. AND FULL PAYMENT OF ANY ASSOCIATED DESIGN FEES. ALL DIMENSIONS ARE SUBJECT TO JOB-SITE VERIFICATION.

PROJECT NUMBER:
 22-0293

PROJECT START DATE:
 02/02/2022

FINALS START DATE:
 06/02/2022

DRAWN BY: ARCH
FINALS BY: KH
CHECKED BY: LL

REVISIONS:

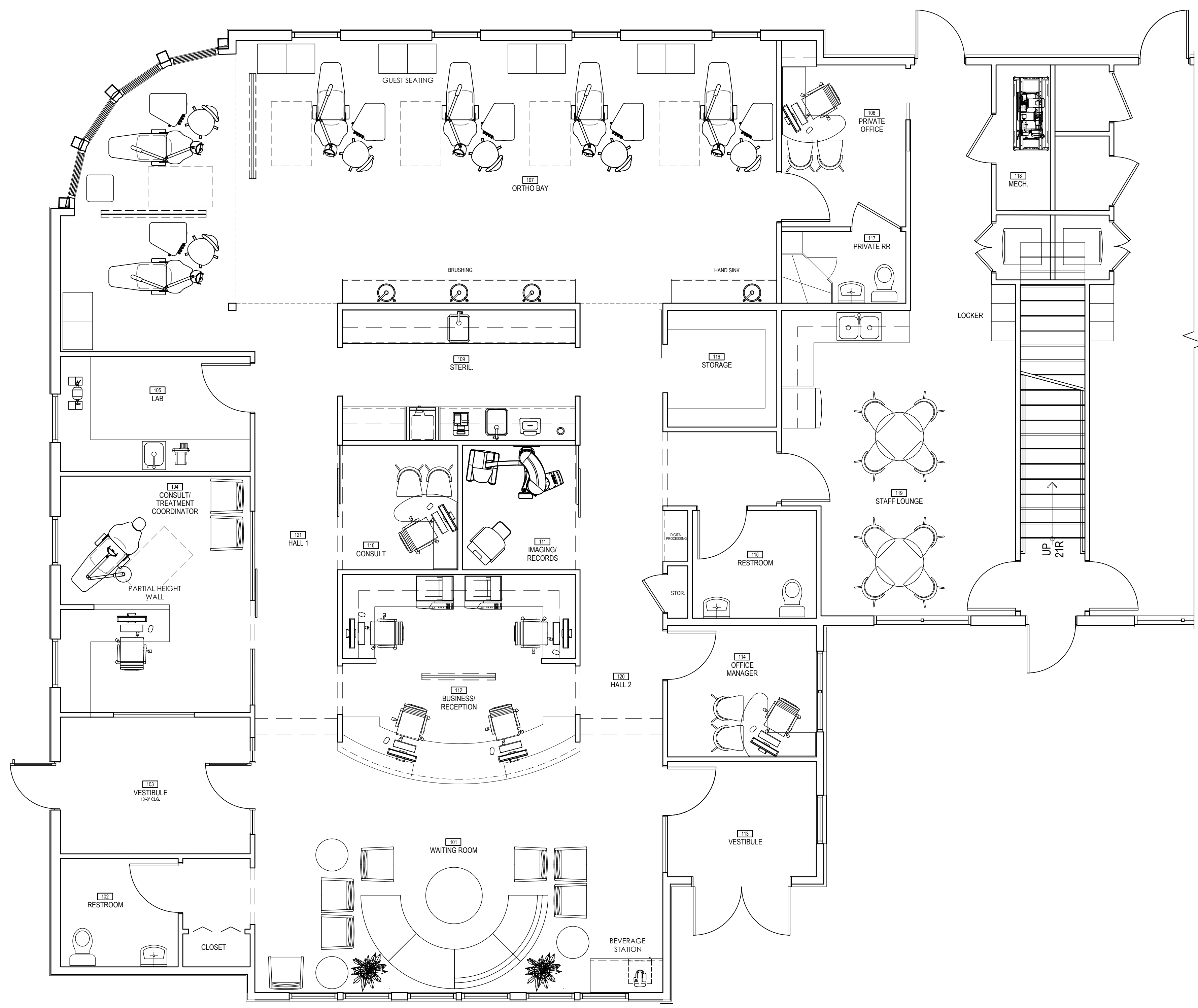
10/20/2022	KH
10/26/2022	KH
--/--	---
--/--	---
--/--	---
--/--	---
--/--	---

INT.SQ.FT.= PER ARCH

SCALE: 1/4"=1'-0" **SHT. SIZE:** 24 x 36

FLOOR PLAN

SA.O



THIS PLAN IS FOR THE SOLE PURPOSE OF SPECIFICATION AND INSTALLATION OF THE DENTAL EQUIPMENT SUPPLIED BY HENRY SCHEIN DENTAL. THE SPACE PLANNING AND CONCEPTUAL DESIGN HAS BEEN PROVIDED BY OTHERS. IT IS THE ARCHITECT/CONTRACTOR'S RESPONSIBILITY TO VERIFY THAT ALL CODE RESTRICTIONS & CLEARANCES ARE MET. DENTAL CHAIR AND CABINET UTILITIES TO BE LOCATED ON JOB-SITE PER MANUFACTURER'S TEMPLATES. LOCATIONS TO BE APPROVED BY DOCTOR AND HENRY SCHEIN EQUIPMENT SPECIALIST PRIOR TO ROUGH-IN.

PROPOSED FLOOR PLAN
 1/4"=1'-0"

REINFORCEMENT SPECIFICATIONS		
QUANTITY	SPEC. NUMBER	DESCRIPTION
1	6A	DENTAL CEILING LIGHT - SUPPLIED AND INSTALLED BY HENRY SCHEIN DENTAL. BLOCKING AND ELECTRICAL BY CONTRACTOR(S).
1	9C	PANORAMIC IMAGING UNIT WITH CEPH (2D OR 3D) - SUPPLIED AND INSTALLED BY HENRY SCHEIN DENTAL. BLOCKING & ELECTRICAL BY CONTRACTOR(S). CONFIRM POWER REQUIREMENTS WITH HENRY SCHEIN DENTAL EQUIPMENT SPECIALIST.

CONSTRUCTION NOTES

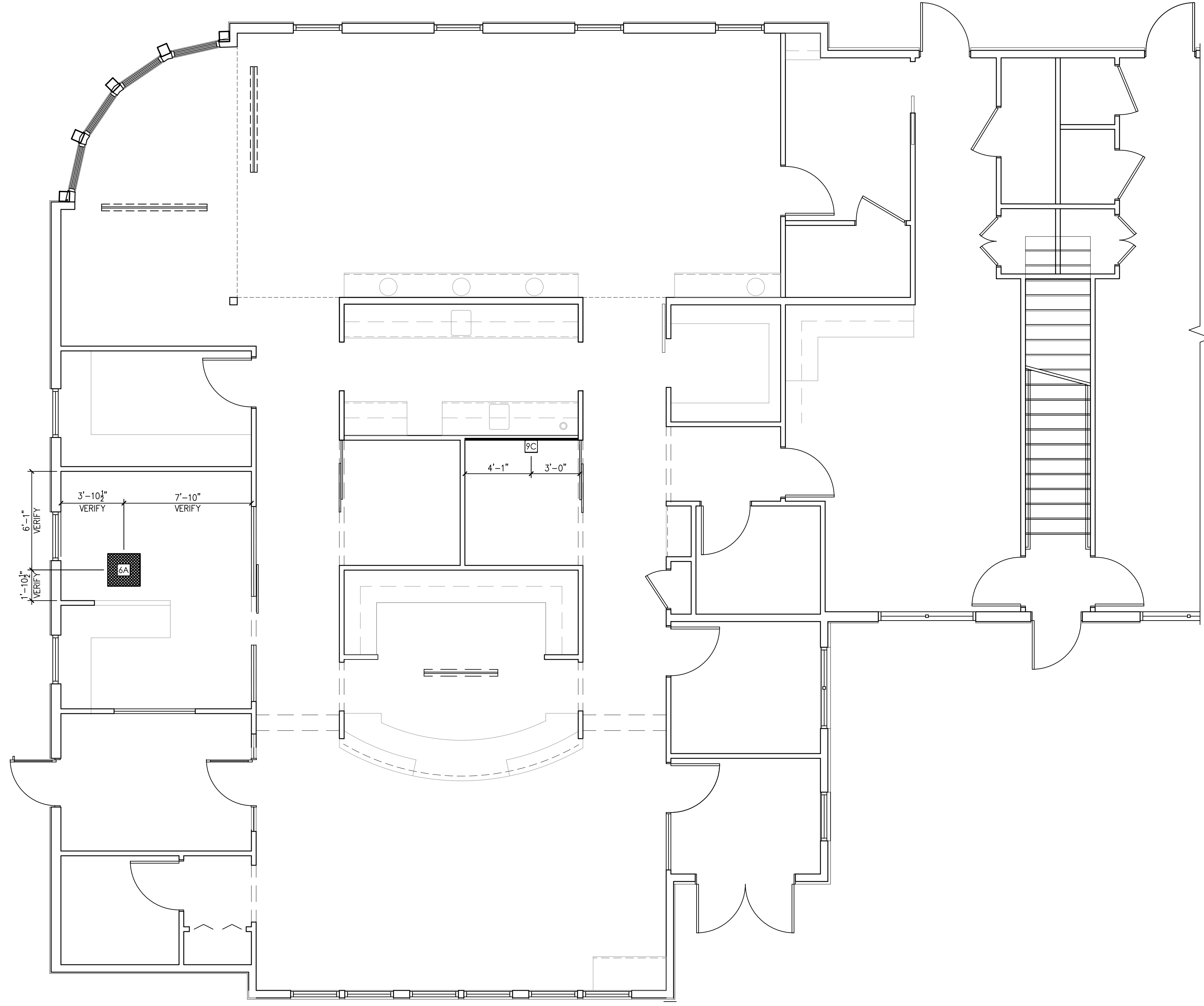
- THIS SPECIFICATION SHEET IS INTENDED AS A GUIDE FOR TRADESMEN. THE FLOOR PLANS ENCLOSED HEREIN ARE SUGGESTIONS FOR THE PLACEMENT OF DENTAL EQUIPMENT. THEY ARE NOT INTENDED FOR CONSTRUCTION.
- VERIFY ALL DIMENSIONS WITH HENRY SCHEIN DENTAL REP. ON JOBSITE. ON SITE MODIFICATIONS MAY NEED TO BE DONE BY CONTRACTOR, BUT SHOULD BE VERIFIED BY ALL PARTIES INVOLVED.
- 5/8" GYPSUM WALLBOARD IS RECOMMENDED THROUGHOUT THE OFFICE TO PROVIDE SOUND ATTENUATION & ADDITIONAL PROTECTION AGAINST X-RAY SCATTER RADIATION.

WALL LEGEND

NEW REINFORCEMENT PLACED FOR WALL-MOUNTED EQUIPMENT. SEE "REINFORCEMENT SPECIFICATION SCHEDULE" FOR MORE INFORMATION.

NEW REINFORCEMENT PLACED FOR CEILING-MOUNTED EQUIPMENT. SEE "REINFORCEMENT SPECIFICATION SCHEDULE" FOR MORE INFORMATION.

SEE SHEETS SED.1 & SED.2 FOR DENTAL EQUIPMENT DETAILS



THIS PLAN IS FOR THE SOLE PURPOSE OF SPECIFICATION AND INSTALLATION OF THE DENTAL EQUIPMENT SUPPLIED BY HENRY SCHEIN DENTAL. THE SPACE PLANNING AND CONCEPTUAL DESIGN HAS BEEN PROVIDED BY OTHERS. IT IS THE ARCHITECT/CONTRACTOR'S RESPONSIBILITY TO VERIFY THAT ALL CODE RESTRICTIONS & CLEARANCES ARE MET. DENTAL CHAIR AND CABINET UTILITIES TO BE LOCATED ON JOB-SITE PER MANUFACTURER'S TEMPLATES. LOCATIONS TO BE APPROVED BY DOCTOR AND HENRY SCHEIN EQUIPMENT SPECIALIST PRIOR TO ROUGH-IN.

DIMENSIONS & REINFORCEMENT SPECIFICATIONS
1/4"=1'-0"

HENRY SCHEIN
INTEGRATED DESIGN STUDIO
10920 W LINCOLN AVE. WEST ALLIS, WI 53227
henryscheinintegrateddesign.com

PROJECT:
DR. BEN THORNTON
THORNTON ORTHODONTICS

LOCATION:
2995 HILYARD STREET
EUGENE, OR 97405

HENRY SCHEIN REP:
DAVID SHEETS

REGION:
OR-AK - OREGON

PHONE #:
541.517.8676

-IMPORTANT NOTE-
THIS DOCUMENT HAS BEEN PREPARED AS AN INSTRUMENT OF PROFESSIONAL SERVICE AND IS NOT AN ARCHITECTURAL PLAN. THE IDEAS/DESIGN INCLUDED HEREIN ARE THE SOLE PROPERTY OF HENRY SCHEIN, INC. AND ARE PROTECTED UNDER COPYRIGHT. THESE PLANS MAY NOT BE USED OR REPRODUCED WITHOUT EXPRESSED WRITTEN CONSENT OF HENRY SCHEIN, INC. AND FULL PAYMENT OF ANY ASSOCIATED DESIGN FEES. ALL DIMENSIONS ARE SUBJECT TO JOB-SITE VERIFICATION.

PROJECT NUMBER:
22-0293

PROJECT START DATE:
02/02/2022

FINALS START DATE:
06/02/2022

DRAWN BY: ARCH KH
FINALS BY: KH
CHECKED BY: LL

REVISIONS:

10/20/2022	KH
10/26/2022	KH
--/--	---
--/--	---
--/--	---
--/--	---
--/--	---
--/--	---

INT.SQ.FT.= PER ARCH

SCALE: 1/4"=1'-0" **SHT. SIZE:** 24 x 36

REINFORCEMENT PLAN

SA.1

P:\ALL REGION\OR Oregon\Aurora\Thornton, Ben\Thornton-LL3

PLUMBING NOTES

- THIS SPECIFICATION SHEET IS INTENDED AS A GUIDE FOR TRADESMEN. THE FLOOR PLANS ENCLOSED HEREIN ARE SUGGESTIONS FOR THE PLACEMENT OF DENTAL EQUIPMENT. THEY ARE NOT INTENDED FOR CONSTRUCTION.
- EXACT EQUIPMENT LOCATIONS MUST BE JOB SITE VERIFIED BY THE HENRY SCHEIN DENTAL EQUIPMENT SPECIALIST.
- FOLLOW MANUFACTURER'S TEMPLATES FOR EXACT REQUIREMENTS FOR ANY EQUIPMENT SUPPLIED BY HENRY SCHEIN DENTAL. CONSULT WITH HENRY SCHEIN DENTAL REP FOR ADDITIONAL INFORMATION.
- ANY REFERENCE TO "AIR", "COMPRESSED AIR" OR "AIR COMPRESSOR" REFER TO THE UNIT AND ALL COMPONENTS WHICH ARE CONSIDERED A CATEGORY 3 DENTAL AIR SUPPLY SYSTEM. REFER THE LOCALLY ACCEPTED VERSION OF NFPA 99 FOR CODE REQUIREMENTS. THIS SHOULD NOT BE CONFUSED WITH "AIR" AS IT IS DEFINED IN CATEGORY 1 OR 2 MEDICAL FACILITIES.
- WATER PRESSURE MUST NOT EXCEED 50 PS1 AT ALL DENTAL UNITS.
- BACK-FLOW PREVENTION IS REQUIRED ON ALL LINES AS PER LOCAL CODE.
- REFER TO ARCHITECT'S DRAWINGS FOR PLUMBING REQUIREMENTS IN ALL AREAS NOT INDICATED ON THIS PLAN.

ALL DIMENSIONS NOTED ON PLAN ARE TO THE CENTERLINE OF PLUMBING OR UTILITY CENTER (UNLESS SHOWN OTHERWISE)

SEE SHEETS SED.1 & SED.2 FOR DENTAL EQUIPMENT DETAILS

VACUUM NOTES

THE VACUUM PIPING LAYOUT HAS A LARGE EFFECT ON THE EFFICIENCY AND RELIABILITY OF THE DENTAL VACUUM SYSTEM. REFER TO MANUFACTURER'S PRE-INSTALLATION GUIDE PROVIDED BY HENRY SCHEIN EQUIPMENT SPECIALIST (FOR SPECIFIC SIZING OF STUB-UP, TRUNK, AND BRANCH LINES).

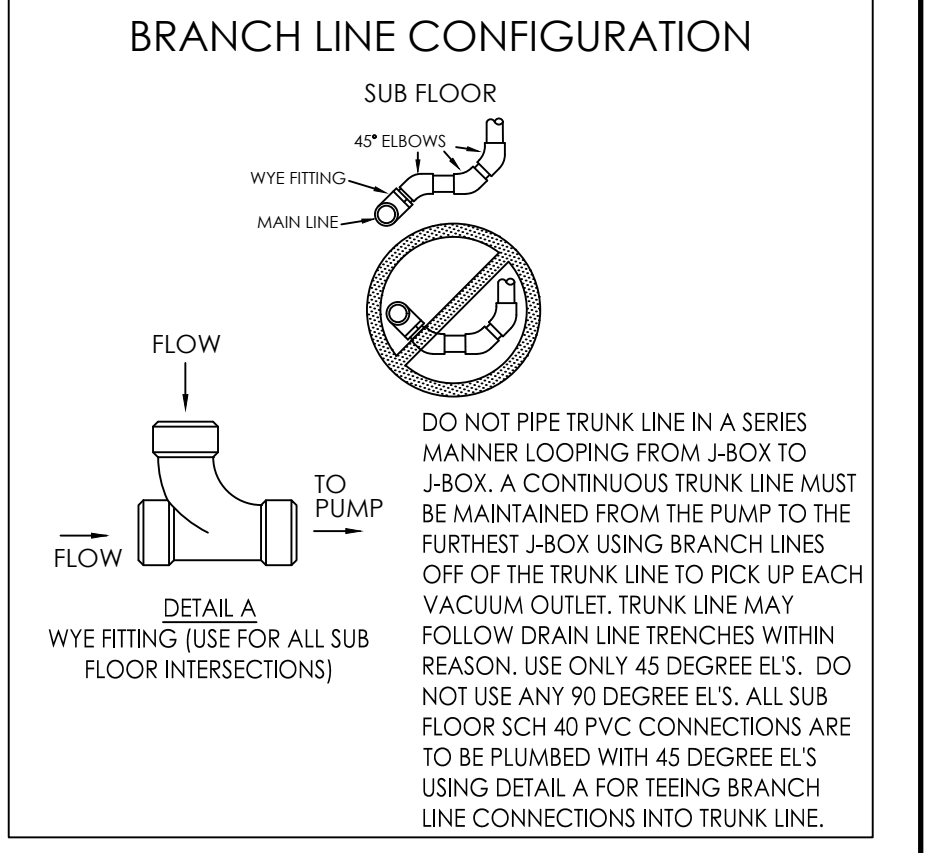
IT IS HIGHLY RECOMMENDED THAT VACUUM LINES RUN UNDERNEATH DENTAL EQUIPMENT BY MEANS OF TRENCHING/ CORING (CONCRETE SLAB) OR IN SUB FLOOR (BASEMENT/ CRAWL SPACE). ALL LINES ARE TO BE DESIGNED WITH PVC PIPING UNLESS DICTATED BY LOCAL CODES TO USE COPPER OR CAST IRON.

TO ENSURE OPTIMUM VACUUM PERFORMANCE, INSTALL MAIN LINE DIRECTLY BELOW THE DENTAL CHAIR, CABINET OR WALL JUNCTION BOX TO REDUCE OR ELIMINATE BRANCH LINE RUNS WHEREVER POSSIBLE.

- 1. STUB-UP**
 TERMINATE VACUUM TRUNK LINE IN MECHANICAL ROOM. PLUMBING CONTRACTOR TO PROVIDE FPT ADAPTOR ON END OF STUB-OUT FROM FLOOR OR WALL. SIZE OF ADAPTOR TO BE DETERMINED BY TRUNK AND PUMP INTAKE PIPE SIZES. SEE DETAILS THIS SET & MANUFACTURER TEMPLATES PROVIDED BY HENRY SCHEIN EQUIPMENT REP. IN THE CASE OF DUAL TRUNK LINE SYSTEM, PROVIDE ENOUGH SPACE BETWEEN STUB-UPS TO INSTALL TEES ON BOTH LINES.

- 2. TRUNK LINE(S)**
 VACUUM TRUNK LINE(S) TO BE SUPPORTED EVERY 6'-0" TO PREVENT SAG AND SLOPED A MINIMUM OF 1/4" PER 10'-0" TOWARD THE VACUUM PUMP.

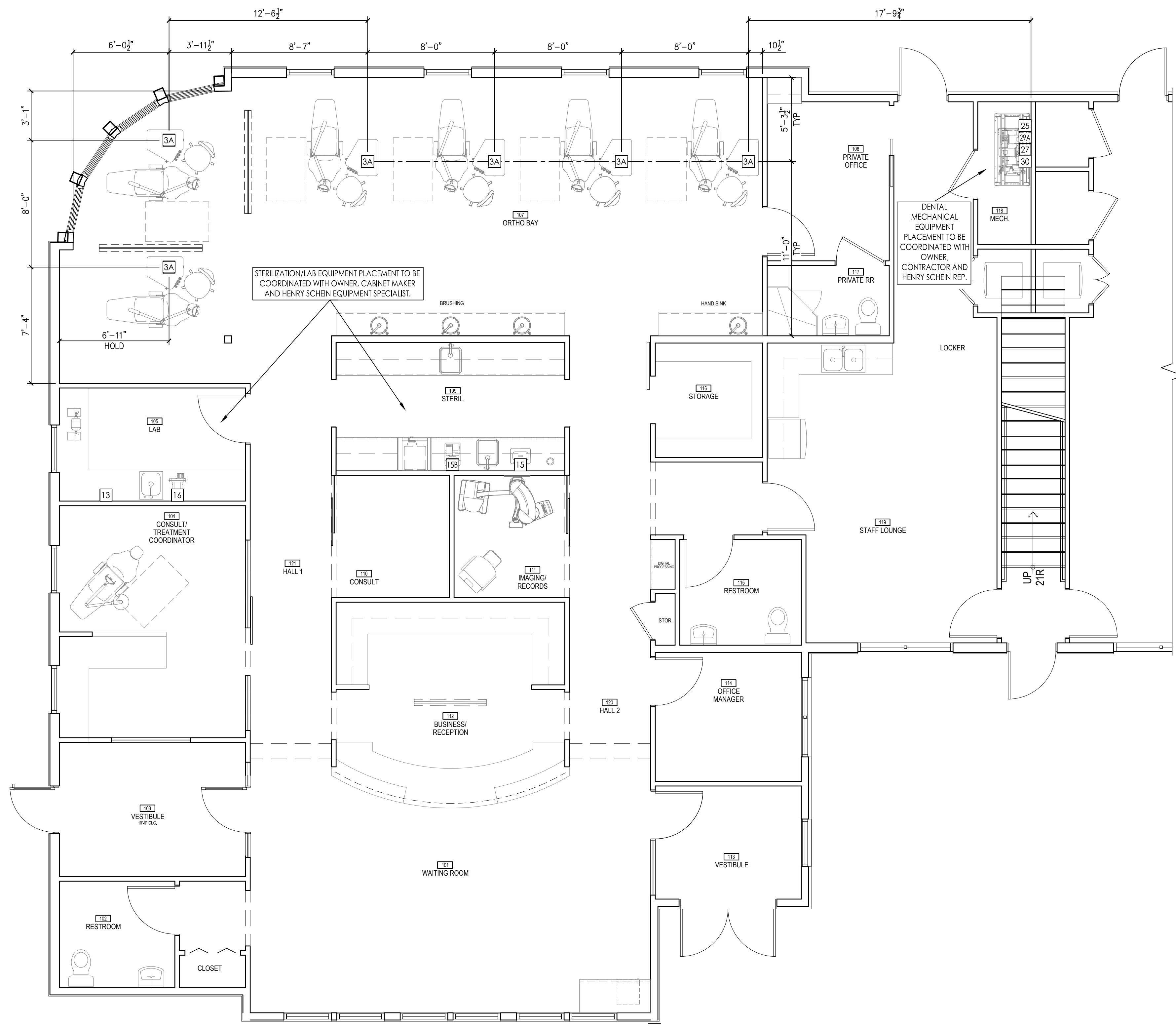
- 3. BRANCH LINE(S)**
 BRANCH LINES ARE TO HAVE "SWEEPING" 90 DEGREE TURNS TO AVOID VACUUM LOSS. A "WYE" FITTING SHOULD BE USED TO JOIN BRANCH LINES TO THE TRUNK LINE.



SPECIAL NOTE:
 IF VACUUM LINES ENCR OACH ON EITHER A WALL OR COLUMN FOOTING, USE 45 DEGREE ELBOWS TO PIPE AROUND FOOTING SO PIPE REACHES PROPER LOCATION.

PLUMBING SPECIFICATIONS

QUANTITY	SPEC. NUMBER	DESCRIPTION	UTILITIES							DETAIL		
			COLD WATER	HOT WATER	DRAIN	COMPRESSED AIR	NATURAL GAS	VACUUM	N2O		OXYGEN	VENT
6	3A	UTILITY CENTER - SELF-CONTAINED WATER. SEE DETAIL(S). ALL UTILITIES MUST CONFORM TO PREVAILING LOCAL CODES.										3A
1	13	COMPRESSED AIR LINE AND VALVE - 1/2" AIR LINE FROM COMPRESSOR (25) BY PLUMBER. TERMINATE WITH A 3/8" ANGLE VALVE.										13
1	15	ULTRASONIC CLEANER - SUPPLIED AND INSTALLED BY HENRY SCHEIN DENTAL. UTILITIES BY CONTRACTOR(S).										15
1	15B	HANDPIECE MAINTENANCE SYSTEM - CONTRACTOR(S) TO PROVIDE REQ'D UTILITIES. 1/2" AIR LINE WITH 1/4" ANGLE VALVE (ABOVE COUNTERTOP). SYSTEM SUPPLIED AND INSTALLED BY HENRY SCHEIN DENTAL.										15B
1	16	MODEL TRIMMER - SUPPLIED AND INSTALLED BY HENRY SCHEIN DENTAL. DO NOT TIE INTO COLD WATER LINE FOR SINK. SEE DETAIL.										16
1	25	DENTAL AIR COMPRESSOR - SUPPLIED BY HENRY SCHEIN DENTAL. INSTALLED BY CONTRACTOR(S). FOR DENTAL AIR DRIVEN DEVICES. PLUMBER TO PROVIDE 1/2" I.D. COPPER TYPE K OR L SUPPLY LINES TO LOCATIONS THAT REQUIRE AIR. BUCK BOOST TRANSFORMER SUPPLIED AND INSTALLED BY ELECTRICIAN (IF REQ'D). FINAL CONNECTIONS BY CONTRACTOR(S).										25
1	27	VACUUM PUMP (DRY) - SUPPLIED BY HENRY SCHEIN DENTAL. INSTALLED BY CONTRACTOR(S). VERIFY TRUNK & BRANCH LINE SIZES WITH MFR RECOMMENDATIONS. USE SCH 40 PVC WHERE PERMITTED BY CODE. PLUMBER TO EXHAUST PUMP TO OUTSIDE. BUCK BOOST TRANSFORMER SUPPLIED AND INSTALLED BY ELECTRICIAN (IF REQ'D). DRAIN BY PLUMBER. FINAL CONNECTIONS BY CONTRACTOR(S). PLUMBER TO PROVIDE WATER LINE WITH HOSE BIB NEAR UNIT. SEE DETAIL.										27
1	29A	AMALGAM SEPARATOR - SUPPLIED BY HENRY SCHEIN DENTAL. INSTALLED BY PLUMBER. VERIFY LOCATION WITH HENRY SCHEIN DENTAL EQUIPMENT SPECIALIST. CONNECT TO VACUUM LINE COMING IN FROM TREATMENT ROOMS.										29A
1	30	REMOTE WATER CONTROL VALVE - SUPPLIED BY HENRY SCHEIN DENTAL. INSTALLED BY PLUMBER ON COLD WATER SUPPLY LINE.										30



THIS PLAN IS FOR THE SOLE PURPOSE OF SPECIFICATION AND INSTALLATION OF THE DENTAL EQUIPMENT SUPPLIED BY HENRY SCHEIN DENTAL. THE SPACE PLANNING AND CONCEPTUAL DESIGN HAS BEEN PROVIDED BY OTHERS. IT IS THE ARCHITECT/CONTRACTOR'S RESPONSIBILITY TO VERIFY THAT ALL CODE RESTRICTIONS & CLEARANCES ARE MET. DENTAL CHAIR AND CABINET UTILITIES TO BE LOCATED ON JOB-SITE PER MANUFACTURER'S TEMPLATES. LOCATIONS TO BE APPROVED BY DOCTOR AND HENRY SCHEIN EQUIPMENT SPECIALIST PRIOR TO ROUGH-IN.

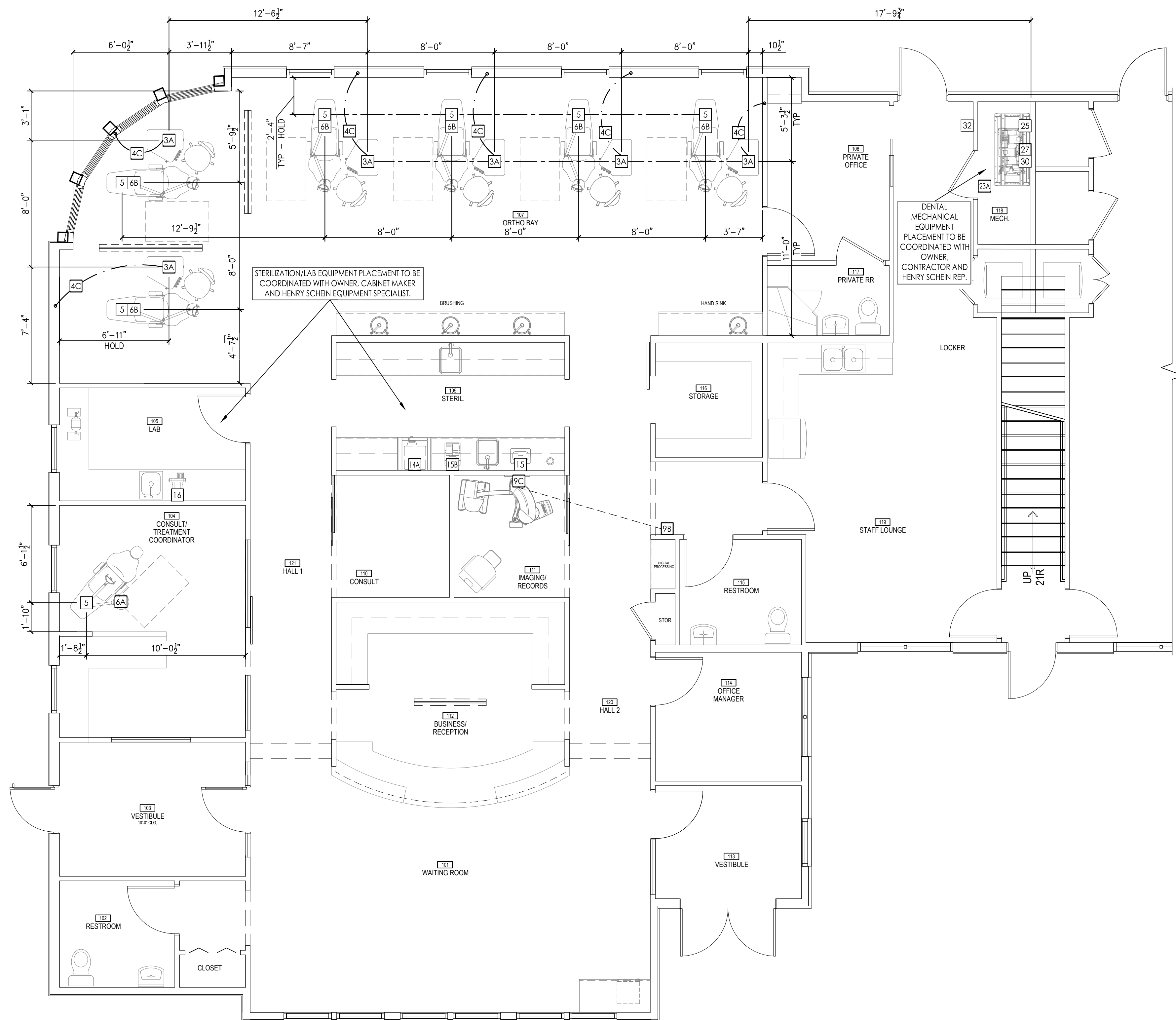
PROPOSED PLUMBING PLAN
 1/4"=1'-0"

ELECTRICAL NOTES

- THIS SPECIFICATION SHEET IS INTENDED AS A GUIDE FOR TRADESMEN. THE FLOOR PLANS ENCLOSED HEREIN ARE SUGGESTIONS FOR THE PLACEMENT OF DENTAL EQUIPMENT. THEY ARE NOT INTENDED FOR CONSTRUCTION.
 - EXACT EQUIPMENT LOCATIONS MUST BE JOB SITE VERIFIED BY THE HENRY SCHEIN DENTAL EQUIPMENT SPECIALIST.
 - FOLLOW MANUFACTURER'S TEMPLATES FOR EXACT REQUIREMENTS FOR ANY EQUIPMENT SUPPLIED BY HENRY SCHEIN DENTAL. CONSULT WITH HENRY SCHEIN DENTAL REP FOR ADDITIONAL INFORMATION.
 - GFCI PROTECTION OR REDUNDANT GROUND IN DENTAL CHAIR RECEPTACLES, DENTAL UTILITY CABINETS AND ANY OTHER AREAS REQUIRED BY LOCAL CODE IS THE RESPONSIBILITY OF THE ELECTRICAL CONTRACTOR.
 - ADDITIONAL CONVENIENCE OUTLETS REQUIRED ON JOBSITE ARE THE RESPONSIBILITY OF ELECTRICAL CONTRACTORS. FOLLOW LOCAL CODE RESTRICTIONS.
 - CONDUIT LOCATIONS (4, 4A, 4B, 4C) SHOULD BE VERIFIED WITH OWNER AND HENRY SCHEIN REP PRIOR TO ROUGH-IN.
 - ALL COMPUTER NETWORKING AND WORKSTATIONS MUST BE SPECIFIED BY CUSTOMER'S COMPUTER SUPPLIER. IF HENRY SCHEIN WILL BE SUPPLYING THE COMPUTERS & NETWORKING COMPONENTS, SEE SHEET SE.2 FOR THE OFFICE TECHNOLOGY PLAN.
 - CONTRACTOR TO PROVIDE AND INSTALL ALL EXIT SIGNS, EMERGENCY LIGHTING AND FIRE SUPPRESSION & DETECTION SYSTEMS AS PER ARCHITECT'S DRAWINGS AND LOCAL CODE.
 - REFER TO ARCHITECT'S DRAWINGS FOR ELECTRICAL REQUIREMENTS IN ALL AREAS NOT INDICATED ON THIS PLAN.
- ALL DIMENSIONS NOTED ON PLAN ARE TO THE CENTERLINE OF RECEPTACLE OR UTILITY CENTER (UNLESS SHOWN OTHERWISE)
- *SPECIFICATIONS MAY INCLUDE DATA, SEE ELECTRICAL SCHEDULE THIS SHEET
- SEE SHEETS SED.1 & SED.2 FOR DENTAL EQUIPMENT DETAILS

ELECTRICAL SPECIFICATIONS

QUANTITY	SPEC. NUMBER	DESCRIPTION	UTILITIES			
			POWER	DEDICATED CIRCUIT	LOW VOLTAGE CONTROL	DATA DROP
		PLEASE NOTE: A LICENSED ELECTRICAL CONTRACTOR IS RESPONSIBLE FOR PROVIDING ALL REQUIRED UTILITIES. ALL REQUIREMENTS TO BE VERIFIED BY MANUFACTURER'S SPEC SHEETS PROVIDED BY HENRY SCHEIN DENTAL EQUIPMENT SPECIALIST. MANUFACTURER'S SPECS SUPERSEDE ANY AND ALL INFORMATION CONTAINED HEREIN.				
		DESCRIPTION				
6	3A	UTILITY CENTER - SELF-CONTAINED WATER. SEE DETAIL(S). ALL UTILITIES MUST CONFORM TO PREVAILING LOCAL CODES.	115V			3A
6	4C	2" PIPE CHASE WITH PULL-STRINGS SUPPLIED & INSTALLED BY ELECTRICIAN. RUN BETWEEN LOCATIONS SHOWN ON PLAN. VERIFY SIZING WITH HSD EQUIPMENT SPECIALIST. SWEEPING 90 DEGREE BENDS. SEE DETAIL FOR MORE INFORMATION.				4C
7	5	DENTAL CHAIR RECEPTACLE - SUPPLIED & INSTALLED BY ELECTRICIAN.	115V			5
1	6A	DENTAL CEILING LIGHT - SUPPLIED AND INSTALLED BY HENRY SCHEIN DENTAL. BLOCKING AND ELECTRICAL BY CONTRACTOR(S).	115V			6A
6	6B	DENTAL LIGHT (CHAIR MOUNTED) - SUPPLIED AND INSTALLED BY HENRY SCHEIN DENTAL. TIED INTO POWER FOR CHAIR.	115V			
1	9B	X-RAY REMOTE EXPOSURE BUTTON - SUPPLIED AND INSTALLED BY HENRY SCHEIN DENTAL. ELECTRICIAN TO SUPPLY AND INSTALL PIPE CHASE WITH PULL-STRING TO (9A) OR (9C) LOCATION. VERIFY SUPPLIER OF EXPOSURE BUTTON AND WIRING WITH HENRY SCHEIN DENTAL EQUIPMENT SPECIALIST.				9B
1	9C	PANORAMIC IMAGING UNIT WITH CEPH (2D OR 3D) - SUPPLIED AND INSTALLED BY HENRY SCHEIN DENTAL. BLOCKING & ELECTRICAL BY CONTRACTOR(S). CONFIRM POWER REQUIREMENTS WITH HENRY SCHEIN DENTAL EQUIPMENT SPECIALIST.	115V & 230V	20A (X2)		9C
1	14A	STERILIZER (AUTOCLAVE) - SUPPLIED AND INSTALLED BY HENRY SCHEIN DENTAL. POWER BY ELECTRICIAN.	115V	20A		14A
1	15	ULTRASONIC CLEANER - SUPPLIED AND INSTALLED BY HENRY SCHEIN DENTAL. UTILITIES BY CONTRACTOR(S).	115V			15
1	15B	HANDPIECE MAINTENANCE SYSTEM - CONTRACTOR(S) TO PROVIDE REQ'D UTILITIES. 1/2" AIR LINE WITH 1/4" ANGLE VALVE (ABOVE COUNTERTOP). SYSTEM SUPPLIED AND INSTALLED BY HENRY SCHEIN DENTAL.	115V			15B
1	16	MODEL TRIMMER - SUPPLIED AND INSTALLED BY HENRY SCHEIN DENTAL. DO NOT TIE INTO COLD WATER LINE FOR SINK. SEE DETAIL.	115V			16
1	23A	EXHAUST FAN FOR DENTAL MECHANICAL CLOSET - SUPPLIED AND INSTALLED BY CONTRACTOR. A THERMOSTAT CONTROLLED FAN IS REQUIRED TO KEEP ROOM TEMPERATURE WITHIN THE EQUIPMENT MANUFACTURER'S RECOMMENDED OPERATING TEMPERATURE RANGE. FAN OUTPUT (CFM) TO BE DETERMINED BY ARCHITECT/ENGINEER. VENT TO OUTSIDE.	115V			
1	25	DENTAL AIR COMPRESSOR - SUPPLIED BY HENRY SCHEIN DENTAL. INSTALLED BY CONTRACTOR(S). FOR DENTAL AIR DRIVEN DEVICES. PLUMBER TO PROVIDE 1/2" I.D. COPPER TYPE K OR L SUPPLY LINES TO LOCATIONS THAT REQUIRE AIR. BUCK BOOST TRANSFORMER SUPPLIED AND INSTALLED BY ELECTRICIAN (IF REQ'D). FINAL CONNECTIONS BY CONTRACTOR(S).	230V	30A		25
1	27	VACUUM PUMP (DRY) - SUPPLIED BY HENRY SCHEIN DENTAL. INSTALLED BY CONTRACTOR(S). VERIFY TRUNK & BRANCH LINE SIZES WITH MFR RECOMMENDATIONS. USE SCH 40 PVC WHERE PERMITTED BY CODE. PLUMBER TO EXHAUST PUMP TO OUTSIDE. BUCK BOOST TRANSFORMER SUPPLIED AND INSTALLED BY ELECTRICIAN (IF REQ'D). DRAIN BY PLUMBER. FINAL CONNECTIONS BY CONTRACTOR(S). PLUMBER TO PROVIDE WATER LINE WITH HOSE BIB NEAR UNIT. SEE DETAIL.	230V	30A (X2)		27
1	30	REMOTE WATER CONTROL VALVE - SUPPLIED BY HENRY SCHEIN DENTAL. INSTALLED BY PLUMBER ON COLD WATER SUPPLY LINE.	115V			30
1	32	MECHANICAL ROOM CONTROL PANEL - SUPPLIED BY HENRY SCHEIN DENTAL. INSTALLED BY ELECTRICIAN 60" A.F.F. ELECTRICIAN TO SUPPLY AND INSTALL 24V CONTROL WIRING FROM PANEL TO EACH COMPRESSOR, VACUUM AND/OR SOLENOID PER MFR SPECS.				32



THIS PLAN IS FOR THE SOLE PURPOSE OF SPECIFICATION AND INSTALLATION OF THE DENTAL EQUIPMENT SUPPLIED BY HENRY SCHEIN DENTAL. THE SPACE PLANNING AND CONCEPTUAL DESIGN HAS BEEN PROVIDED BY OTHERS. IT IS THE ARCHITECT/CONTRACTOR'S RESPONSIBILITY TO VERIFY THAT ALL CODE RESTRICTIONS & CLEARANCES ARE MET. DENTAL CHAIR AND CABINET UTILITIES TO BE LOCATED ON JOB-SITE PER MANUFACTURER'S TEMPLATES. LOCATIONS TO BE APPROVED BY DOCTOR AND HENRY SCHEIN EQUIPMENT SPECIALIST PRIOR TO ROUGH-IN.

PROPOSED ELECTRICAL PLAN
 1/4"=1'-0"

P:\ALL REGION\DR. Ben Thornton\Ben Thornton - L1-F3

COMPRESSED AIR: 1/2" SUPPLY LINE FROM COMPRESSOR BY PLUMBER. STUB-UP FROM FLOOR 1"-2". TERMINATE WITH 3/8" ANGLE VALVE. PRESSURE 100 PSI MAX.

CENTRAL VACUUM: 5/8" RISER BY PLUMBER (SCH. 40 PVC OR TYPE M COPPER). TERMINATE 1'-2" A.F.F.

ELECTRICAL: TWO GANG BOX & 115V QUAD OUTLET BY ELECTRICIAN.

CHASE: GRAY ELECTRICAL PVC PIPE CHASE WITH PULL-STRING BY ELECTRICIAN (SEE SHEET SE.1 FOR SIZE & LOCATIONS). 6" MIN. RADIUS FOR ALL BENDS. STUB-UP FLUSH WITH SUB-FLOOR, MARK LOCATION AT FINISH.

NOTES:
 1. DETAIL PROVIDED FOR UTILITY REQUIREMENTS. REFER TO MANUFACTURER'S INSTALLATION GUIDE FOR ADDITIONAL INFORMATION. HENRY SCHEIN DENTAL EQUIPMENT SPECIALIST WILL PROVIDE INSTALLATION TEMPLATE UPON REQUEST.
 2. INSTALLATION MUST CONFORM TO ALL LOCAL ELECTRICAL AND PLUMBING CODES.
 3. ALL UTILITIES HEREIN TO BE SUPPLIED & INSTALLED BY LICENSED CONTRACTORS. FINAL CONNECTIONS TO EQUIPMENT BY HENRY SCHEIN DENTAL.
 4. ALL UTILITIES MUST BE NO HIGHER THAN 4 1/2" A.F.F. AT FINISH.
 5. ALL PLUMBED SYSTEMS MUST BE FLUSHED CLEAN OF ANY DEBRIS PRIOR TO EQUIPMENT INSTALLATION.

UTILITY CENTER EXTENTS

HEAD OF CHAIR

TOE OF CHAIR

TOP VIEW

FOLLOW LOCAL CODES FOR ALL WORK.

5" (NOMINAL)

CEILING AS PER OWNER/ARCHITECT

INTERIOR PARTITION. CONSTRUCTION AS PER LOCAL CODES. SEE ARCHITECT.

2" CONDUIT - VERTICAL PIPE CHASE WITH PULL-STRING SUPPLIED AND INSTALLED BY CONTRACTOR. 6" MIN. SWEEPING BENDS. RUN FROM ABOVE CEILING DOWN WALL SUB FLOOR AND CONTINUE TO CHAIR/CART UTILITY CENTER. SEE CHAIR/CABINET/CART UTILITY CENTER DETAIL FOR CONDUIT TERMINATION LOCATION. COORDINATE WITH HENRY SCHEIN REP.

NOTES:
 1. DETAIL PROVIDED FOR UTILITY REQUIREMENTS. REFER TO CHAIR MANUFACTURER'S INSTALLATION GUIDE FOR ADDITIONAL INFORMATION. HENRY SCHEIN DENTAL REP WILL PROVIDE INSTALLATION TEMPLATE UPON REQUEST.
 2. INSTALLATION MUST CONFORM TO ALL LOCAL ELECTRICAL CODES.
 3. ALL UTILITIES HEREIN TO BE SUPPLIED & INSTALLED BY LICENSED CONTRACTORS. FINAL CONNECTIONS TO EQUIPMENT BY HENRY SCHEIN DENTAL.

RECESSED DUPLEX OUTLET WITH BRASS COVER PLATE FLUSH WITH FINISHED FLOOR BY ELECTRICIAN. COORDINATE EXACT FINISH WITH ARCHITECT AND OWNER.

TOP VIEW

3A UTILITY CENTER
NOT TO SCALE

4C CONTINUOUS CHASE
NOT TO SCALE

5 RECESSED CHAIR OUTLET
NOT TO SCALE

NOTES:
 1. DETAIL PROVIDED FOR BLOCKING & UTILITY REQUIREMENTS. REFER TO MANUFACTURER'S INSTALLATION GUIDE FOR ADDITIONAL INFORMATION.
 2. INSTALLATION MUST CONFORM TO ALL LOCAL FRAMING AND ELECTRICAL CODES.
 3. PROVIDE ADEQUATE BLOCKING AND STRUCTURAL BRACING TO SUPPORT A LIVE LOAD OF 200 LBS. BLOCKING MUST BE LEVEL.
 4. MOUNTING MATERIALS SUPPLIED AND INSTALLED BY CONTRACTOR.
 5. FINAL CONNECTIONS TO BE MADE BY HENRY SCHEIN DENTAL.

PRODUCT SPECIFICATIONS	
NOMINAL VAC RATING	120
VOLTAGE MIN/MAX	108/132
FULL LOAD AMPS	1 - 5A
WEIGHT (LBS)	145

SUPPORT STRUCTURE AND BRACING SPECIFIED BY ENGINEER. SUPPLIED AND INSTALLED BY CONTRACTOR.

ELECTRICIAN TO PROVIDE JUNCTION BOX & 115V POWER FEED WITH 18" WHIP ABOVE CEILING FOR LIGHT. SEE HENRY SCHEIN REP FOR FINAL TERMINATION POINT, DRILL HOLE & FEED WHIP THROUGH BACKING INTO TRACK LIGHT FOR FINAL CONNECTIONS.

BLOCKING - (2) LAYERS OF 3/4" CDX PLYWOOD, GLUED & SCREWED TOGETHER. FOR NON-COMBUSTIBLE CONSTRUCTION, FRP PLYWOOD MAY BE USED OR BLOCKING MAY BE WRAPPED IN FIRECODE CORE GYP. BRD. FOLLOW LOCAL CODES.

MOUNT BLOCKING AS CLOSE TO UNDERSIDE OF FINISHED CEILING AS POSSIBLE.

LIGHT COMPONENTS SUPPLIED AND INSTALLED BY HENRY SCHEIN DENTAL.

2'-0" SQUARE

FINISHED CEILING

FOLLOW LOCAL CODES FOR ALL WORK.

DETAIL PROVIDED FOR UTILITY REQUIREMENTS. REFER TO MANUFACTURER'S INSTALLATION GUIDE FOR ADDITIONAL INFORMATION.

5'-0" CENTERLINE OF JUNCTION BOX

SINGLE-GANG JUNCTION BOX & CONDUIT TO ABOVE CEILING (OR PER CODE) WITH PULL-STRING BY ELECTRICIAN TO 9A OR 9C LOCATION. SEE SHEET SE.1.

EXPOSURE BUTTON SUPPLIED AND INSTALLED BY HENRY SCHEIN DENTAL AT FINISH.

FOLLOW LOCAL CODES FOR ALL WORK.

DETAIL PROVIDED FOR BLOCKING & UTILITY REQUIREMENTS. REFER TO MANUFACTURER'S INSTALLATION GUIDE FOR ADDITIONAL INFORMATION.

MOUNTING MATERIALS SUPPLIED AND INSTALLED BY CONTRACTOR.

COLD-FORMED STEEL (CFS) WALL FRAMING, TYP.

CONFIRM HEIGHTS WILL NOT CONFLICT WITH X-RAY BRACKET HEIGHTS. SEE HENRY SCHEIN REP.

CENTERLINE OF X-RAY COLUMN. SEE SHEET SA.1 FOR LOCATION.

PROPERLY SECURE FRAMING TO STRUCTURE ABOVE.

(2) LAYERS OF 3/4" CDX PLYWOOD, GLUED AND SCREWED TOGETHER WITH SIMPSON STRONG-TIE F10T250BD #10X2-1/2" BUGLE HEAD SELF-DRILLING SCREWS EVERY 12". MOUNT DIRECTLY TO STEEL STUDS. USE 1/4" TOGGLER BRAND TOGGLES 3" TO 4" IN LENGTH TO SECURE PLYWOOD TO FRAMING. GYP. BRD. OVER AT FINISH.

SINGLE-GANG JUNCTION BOX AND 1" CONDUIT TO ABOVE CEILING (OR PER CODE) WITH PULL-STRING BY ELECTRICIAN TO 9B LOCATION. SEE SHEET SE.1.

SINGLE-GANG JUNCTION BOX AND 1" CONDUIT TO ABOVE CEILING (OR PER CODE) BY ELECTRICIAN FOR CONNECTION TO DEDICATED COMPUTER OR SERVER. DATA CABLING & RJ45 OUTLET BY OWNER'S I.T. COMPANY.

SINGLE-GANG JUNCTION BOX W/ 230V SIMPLEX OUTLET ON DEDICATED 25A CIRCUIT BY ELECTRICIAN (VERIFY WITH HENRY SCHEIN EQUIPMENT REP).

SINGLE-GANG JUNCTION BOX W/ 115V SIMPLEX OUTLET ON DEDICATED 20A CIRCUIT BY ELECTRICIAN.

(2) LAYERS OF 3/4" CDX PLYWOOD

5/8" GYP. BRD. AT FINISH

ELEVATION VIEW

PLAN VIEW

6A TYPICAL CEILING-MOUNT DENTAL LIGHT
NOT TO SCALE

9B X-RAY EXPOSURE BUTTON
NOT TO SCALE

9C PANORAMIC X-RAY
NOT TO SCALE

FOLLOW LOCAL CODES FOR ALL WORK.

DETAIL PROVIDED FOR UTILITY REQUIREMENTS.

1/2" SUPPLY LINE FROM COMPRESSOR BY PLUMBER. STUB-OUT FROM WALL 1"-2". TERMINATE WITH 3/8" ANGLE VALVE. PRESSURE 100 PSI MAX.

ANCHOR LINES SECURELY TO A STUD OR A CROSS BRACE TO PREVENT MOVEMENT.

SEE SHEET SP.1 OR HENRY SCHEIN REP.

FOLLOW LOCAL CODES FOR ALL WORK.

DETAIL PROVIDED FOR UTILITY REQUIREMENTS. REFER TO MANUFACTURER'S INSTALLATION GUIDE FOR ADDITIONAL INFORMATION.

DENTAL STERILIZER SUPPLIED AND INSTALLED BY HENRY SCHEIN DENTAL.

SINGLE GANG BOX & DUPLEX OUTLET ON A 115V, 20A DEDICATED CIRCUIT BY ELECTRICIAN.

DATA: SINGLE GANG BOX AT 44" A.F.F. WITH 1" CONDUIT AND PULL STRING TO 4" ABOVE FINISHED CEILING BY CONTRACTOR. DATA CABLING & RJ45 OUTLET BY OWNER'S I.T. COMPANY.

2'-0" MIN.

3'-8" CENTERLINE OF JUNCTION BOX

FOLLOW LOCAL CODES FOR ALL WORK.

DETAIL PROVIDED FOR UTILITY REQUIREMENTS. REFER TO MANUFACTURER'S INSTALLATION GUIDE FOR ADDITIONAL INFORMATION.

ULTRASONIC CLEANER SUPPLIED AND INSTALLED BY HENRY SCHEIN DENTAL.

SINGLE GANG BOX & 115V DUPLEX OUTLET BY ELECTRICIAN.

3'-8" CENTERLINE OF JUNCTION BOX

13 DENTAL AIR LINE
NOT TO SCALE

14A AUTOCLAVE STERILIZER (COUNTERTOP)
NOT TO SCALE

15 ULTRASONIC CLEANER (COUNTERTOP)
NOT TO SCALE

HENRY SCHEIN
INTEGRATED DESIGN STUDIO
henryscheinintegrateddesign.com

DR. BEN THORNTON
THORNTON ORTHODONTICS

LOCATION: 2995 HILYARD STREET, EUGENE, OR 97405

PROJECT: HENRY SCHEIN REP: DAVID SHEETS

REGION: OR-AK - OREGON

PHONE #: 541.517.8676

IMPORTANT NOTE:
 THIS DOCUMENT HAS BEEN PREPARED AS AN INSTRUMENT OF PROFESSIONAL SERVICE AND IS NOT AN ARCHITECTURAL PLAN. THE IDEAS/DESIGN INCLUDED HEREIN ARE THE SOLE PROPERTY OF HENRY SCHEIN, INC. AND ARE PROTECTED UNDER COPYRIGHT. THESE PLANS MAY NOT BE USED OR REPRODUCED WITHOUT EXPRESSED WRITTEN CONSENT OF HENRY SCHEIN, INC. AND FULL PAYMENT OF ANY ASSOCIATED DESIGN FEES. ALL DIMENSIONS ARE SUBJECT TO JOB-SITE VERIFICATION.

PROJECT NUMBER: 22-0293

PROJECT START DATE: 02/02/2022

FINALS START DATE: 06/02/2022

DRAWN BY: ARCH KH

FINALS BY: LL

CHECKED BY:

REVISIONS:

10/20/2022	KH
10/26/2022	KH
-/-/-	---
-/-/-	---
-/-/-	---
-/-/-	---
-/-/-	---
-/-/-	---

INT.SQ.FT.= PER ARCH

SCALE: SEE DETAIL

SHT. SIZE: 24 x 36

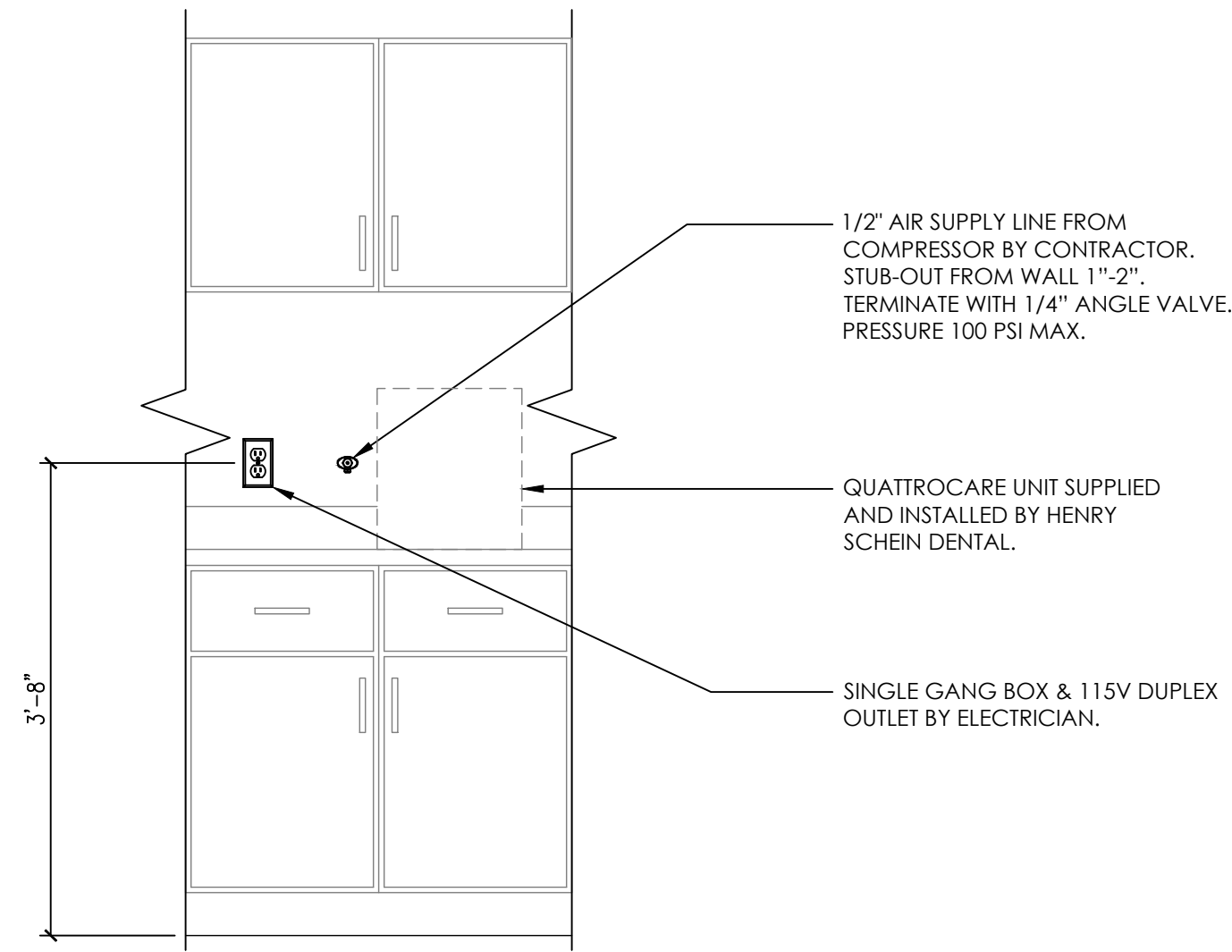
DENTAL EQUIP. DETAILS

SED.1

© 2022 BY HENRY SCHEIN, INC.

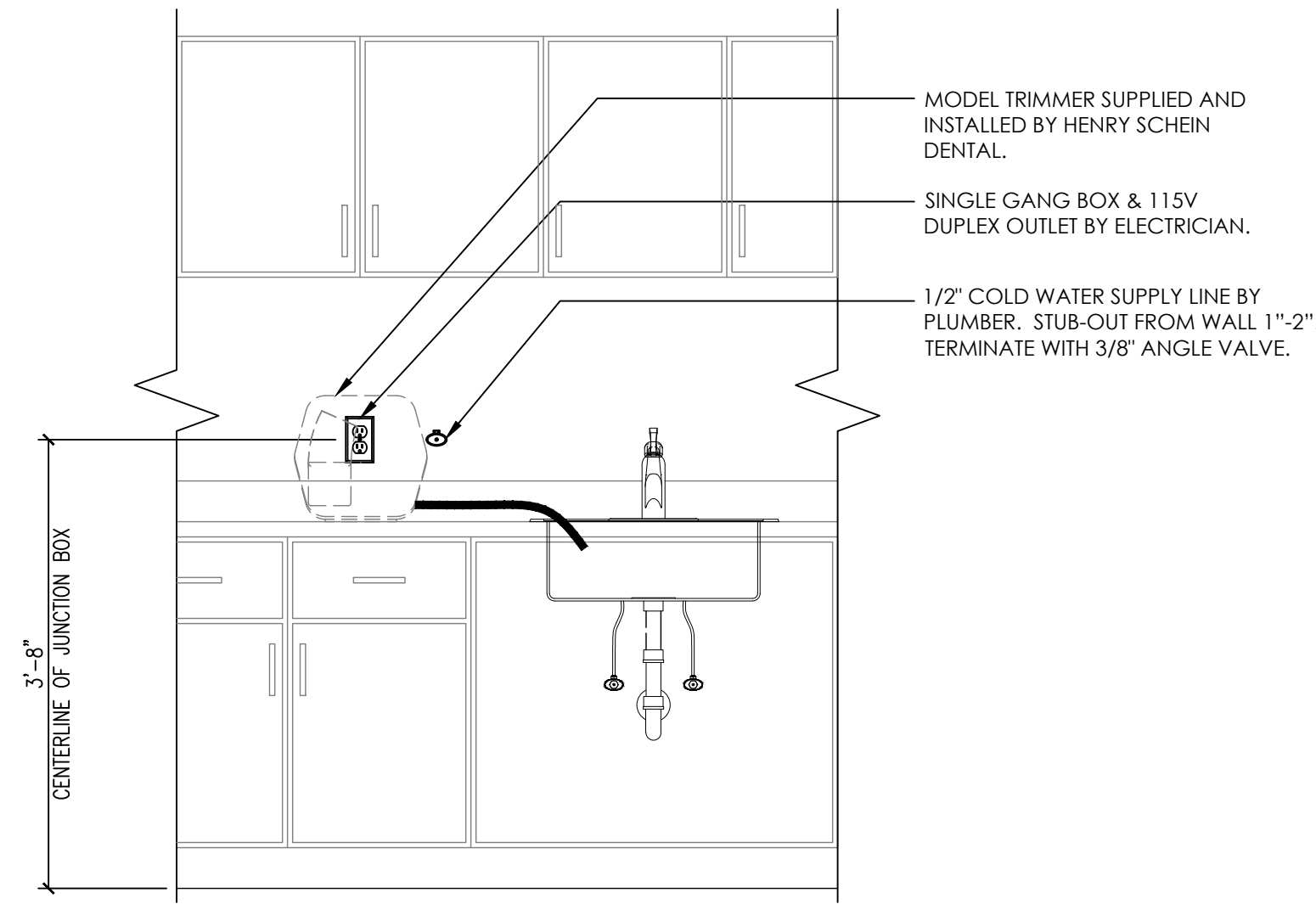
FOLLOW LOCAL CODES FOR ALL WORK.

DETAIL PROVIDED FOR UTILITY REQUIREMENTS.
REFER TO MANUFACTURER'S INSTALLATION
GUIDE FOR ADDITIONAL INFORMATION.



FOLLOW LOCAL CODES FOR ALL WORK.

DETAIL PROVIDED FOR UTILITY REQUIREMENTS.
REFER TO MANUFACTURER'S INSTALLATION
GUIDE FOR ADDITIONAL INFORMATION.

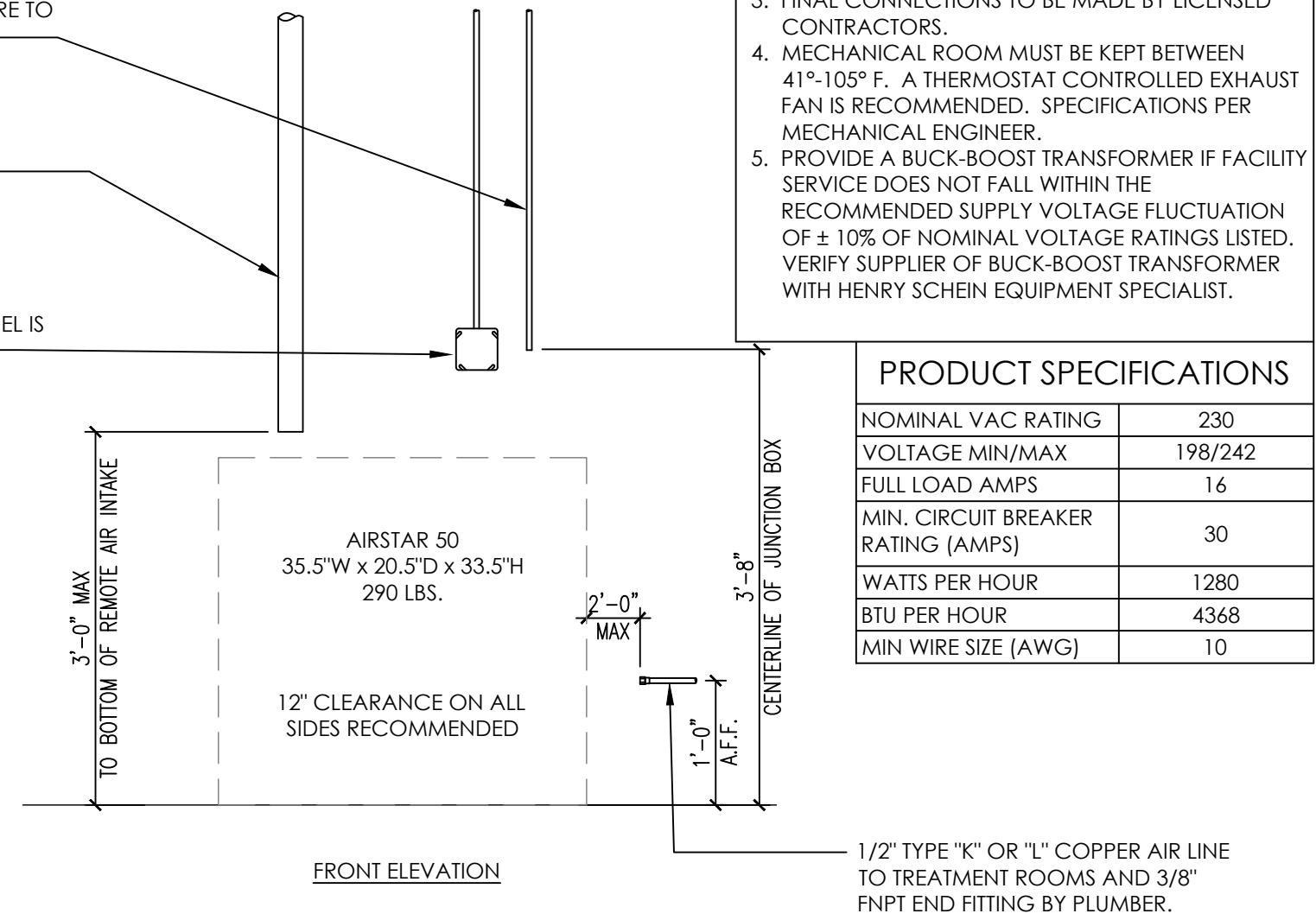


THIS COMPRESSOR MEETS THE REQUIREMENTS FOR
FACILITIES UTILIZING NO SEDATION TO MODERATE
SEDATION AS DEFINED BY NFPA 99.

RIGID CONDUIT TO 6\"/>

2\"/>

DUPLEX BOX & 230V, 30A DEDICATED
CIRCUIT BY ELECTRICIAN. POWER IS
HARDWIRED. ELECTRICIAN TO SUPPLY
DISCONNECT BOX IF ELECTRICAL PANEL IS
NOT IN MECHANICAL ROOM.



- NOTES:
1. DETAIL PROVIDED FOR UTILITY REQUIREMENTS. REFER TO MANUFACTURER'S INSTALLATION GUIDE FOR ADDITIONAL INFORMATION.
 2. INSTALLATION MUST CONFORM TO ALL LOCAL ELECTRICAL AND PLUMBING CODES.
 3. FINAL CONNECTIONS TO BE MADE BY LICENSED CONTRACTORS.
 4. MECHANICAL ROOM MUST BE KEPT BETWEEN 41°-105° F. A THERMOSTAT CONTROLLED EXHAUST FAN IS RECOMMENDED. SPECIFICATIONS PER MECHANICAL ENGINEER.
 5. PROVIDE A BUCK-BOOST TRANSFORMER IF FACILITY SERVICE DOES NOT FALL WITHIN THE RECOMMENDED SUPPLY VOLTAGE FLUCTUATION OF ± 10% OF NOMINAL VOLTAGE RATINGS LISTED. VERIFY SUPPLIER OF BUCK-BOOST TRANSFORMER WITH HENRY SCHEIN EQUIPMENT SPECIALIST.

PRODUCT SPECIFICATIONS

NOMINAL VAC RATING	230
VOLTAGE MIN/MAX	198/242
FULL LOAD AMPS	16
MIN. CIRCUIT BREAKER RATING (AMPS)	30
WATTS PER HOUR	1280
BTU PER HOUR	4368
MIN WIRE SIZE (AWG)	10

15B KAVO QUATTROCARE MAINTENANCE SYSTEM
NOT TO SCALE

RIGID CONDUIT TO 6\"/>

(1) 3\"/>

TWO GANG BOX & (2) 230V, 30A DEDICATED CIRCUITS BY ELECTRICIAN. POWER IS HARDWIRED. ELECTRICIAN TO SUPPLY DISCONNECT BOX IF ELECTRICAL PANEL IS NOT IN MECHANICAL ROOM.

SINGLE GANG BOX & (2) 115V NEMA 5-15R SIMPLEX OUTLET BY ELECTRICIAN FOR MASTER CONTROLLER. DRAW: 5A

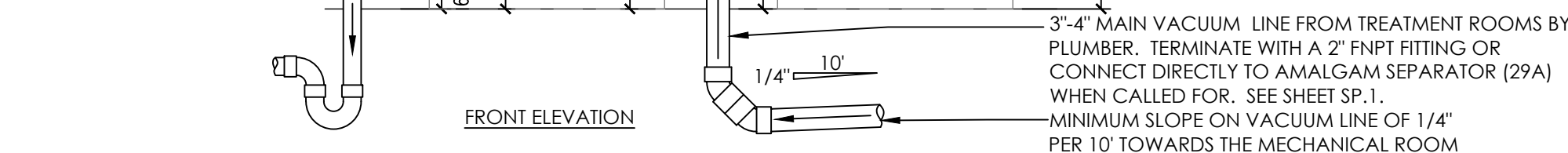
1/2\"/>

1/2\"/>

- NOTES:
1. DETAIL PROVIDED FOR UTILITY REQUIREMENTS. REFER TO MANUFACTURER'S INSTALLATION GUIDE FOR ADDITIONAL INFORMATION.
 2. INSTALLATION MUST CONFORM TO ALL LOCAL ELECTRICAL AND PLUMBING CODES.
 3. FINAL CONNECTIONS TO BE MADE BY LICENSED CONTRACTOR(S).
 4. MECHANICAL ROOM MUST BE KEPT BETWEEN 40°-104° F. A THERMOSTAT CONTROLLED EXHAUST FAN IS RECOMMENDED. SPECIFICATIONS PER MECHANICAL ENGINEER.
 5. PROVIDE A BUCK-BOOST TRANSFORMER IF FACILITY SERVICE DOES NOT FALL WITHIN THE RECOMMENDED SUPPLY VOLTAGE FLUCTUATION OF ± 10% OF NOMINAL VOLTAGE RATINGS LISTED. VERIFY SUPPLIER OF BUCK-BOOST TRANSFORMER WITH HENRY SCHEIN EQUIPMENT SPECIALIST.

PRODUCT SPECIFICATIONS

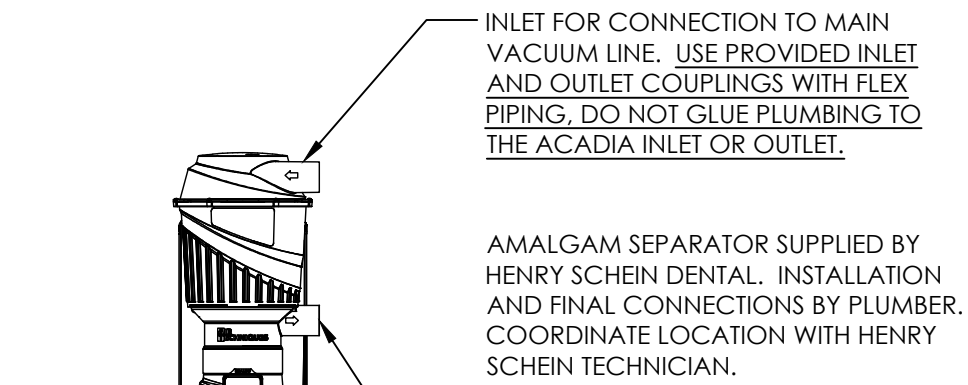
# OF MOTORS	2
NOMINAL VAC RATING	230
VOLTAGE MIN/MAX	205/240
FULL LOAD AMPS	18 (X 2)
MIN. CIRCUIT BREAKER RATING (AMPS)	30 (X 2)
MAX WATTS PER HOUR	4490
IDLE/MAX BTU PER HOUR	6042/15320
MIN WIRE SIZE (AWG)	10



16 MODEL TRIMMER
NOT TO SCALE

FOLLOW LOCAL CODES FOR ALL WORK.

DETAIL PROVIDED FOR UTILITY REQUIREMENTS.
REFER TO MANUFACTURER'S INSTALLATION
GUIDE FOR ADDITIONAL INFORMATION.



INLET FOR CONNECTION TO MAIN VACUUM LINE. USE PROVIDED INLET AND OUTLET COUPLINGS WITH FLEX PIPING. DO NOT GLUE PLUMBING TO THE ACADIA INLET OR OUTLET.

AMALGAM SEPARATOR SUPPLIED BY HENRY SCHEIN DENTAL. INSTALLATION AND FINAL CONNECTIONS BY PLUMBER. COORDINATE LOCATION WITH HENRY SCHEIN TECHNICIAN.

OUTLET FOR CONNECTION TO WET RING VACUUM INLET OR DRY VACUUM COLLECTION TANK. MOUNT SEPARATOR SO THAT THIS OUTLET IS HIGHER THAN THE VACUUM TANK OR PUMP INLET. USE PROVIDED INLET AND OUTLET COUPLINGS WITH FLEX PIPING. DO NOT GLUE PLUMBING TO THE ACADIA INLET OR OUTLET.

SEE VACUUM PUMP DETAIL FOR VACUUM LINE TERMINATION FROM TREATMENT ROOMS.

MECHANICAL ROOM FLOOR

COORDINATE ON SITE MUST BE HIGHER THAN VACUUM UNIT

FRONT ELEVATION

25 AIRTECHNIQUES AIRSTAR 50 COMPRESSOR
NOT TO SCALE

FOLLOW LOCAL CODES FOR ALL WORK.

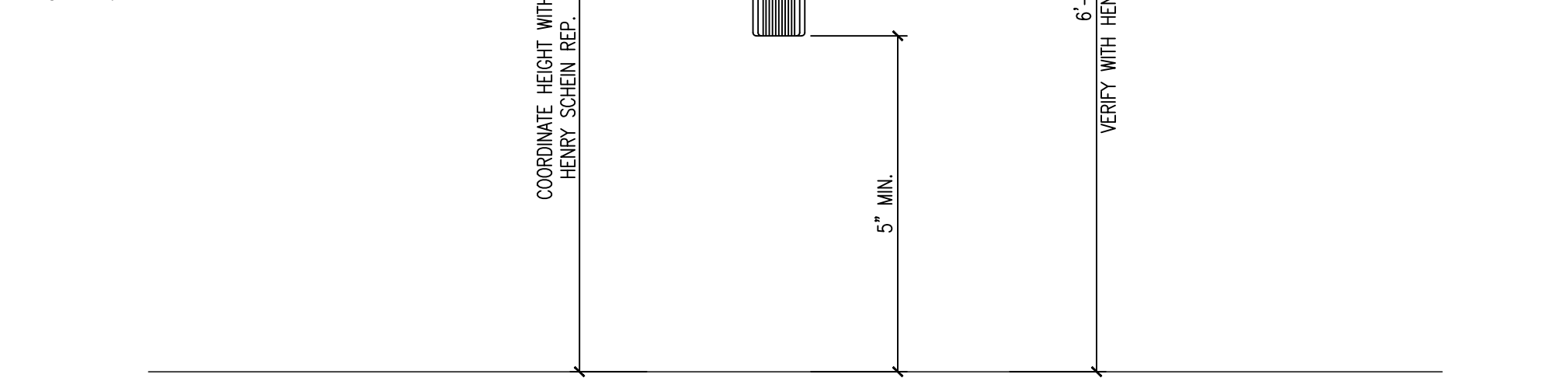
DETAIL PROVIDED FOR UTILITY REQUIREMENTS.
REFER TO MANUFACTURER'S INSTALLATION
GUIDE FOR ADDITIONAL INFORMATION.

RIGID CONDUIT (AS NEEDED OR PER CODE) & 18/4 LOW VOLTAGE WIRE TO REMOTE SHUT-OFF BY ELECTRICIAN.

(2) 1\"/>

1\"/>

REMOTE WATER CONTROL VALVE SUPPLIED BY HENRY SCHEIN DENTAL. INSTALLED BY PLUMBER.



27 AIRTECHNIQUES MOJAVE 2V7 VACUUM
NOT TO SCALE

FOLLOW LOCAL CODES FOR ALL WORK.

DETAIL PROVIDED FOR UTILITY REQUIREMENTS.
REFER TO MANUFACTURER'S INSTALLATION
GUIDE FOR ADDITIONAL INFORMATION.



29A AIRTECHNIQUES ACADIA AMALGAM SEPARATOR
NOT TO SCALE

FOLLOW LOCAL CODES FOR ALL WORK.

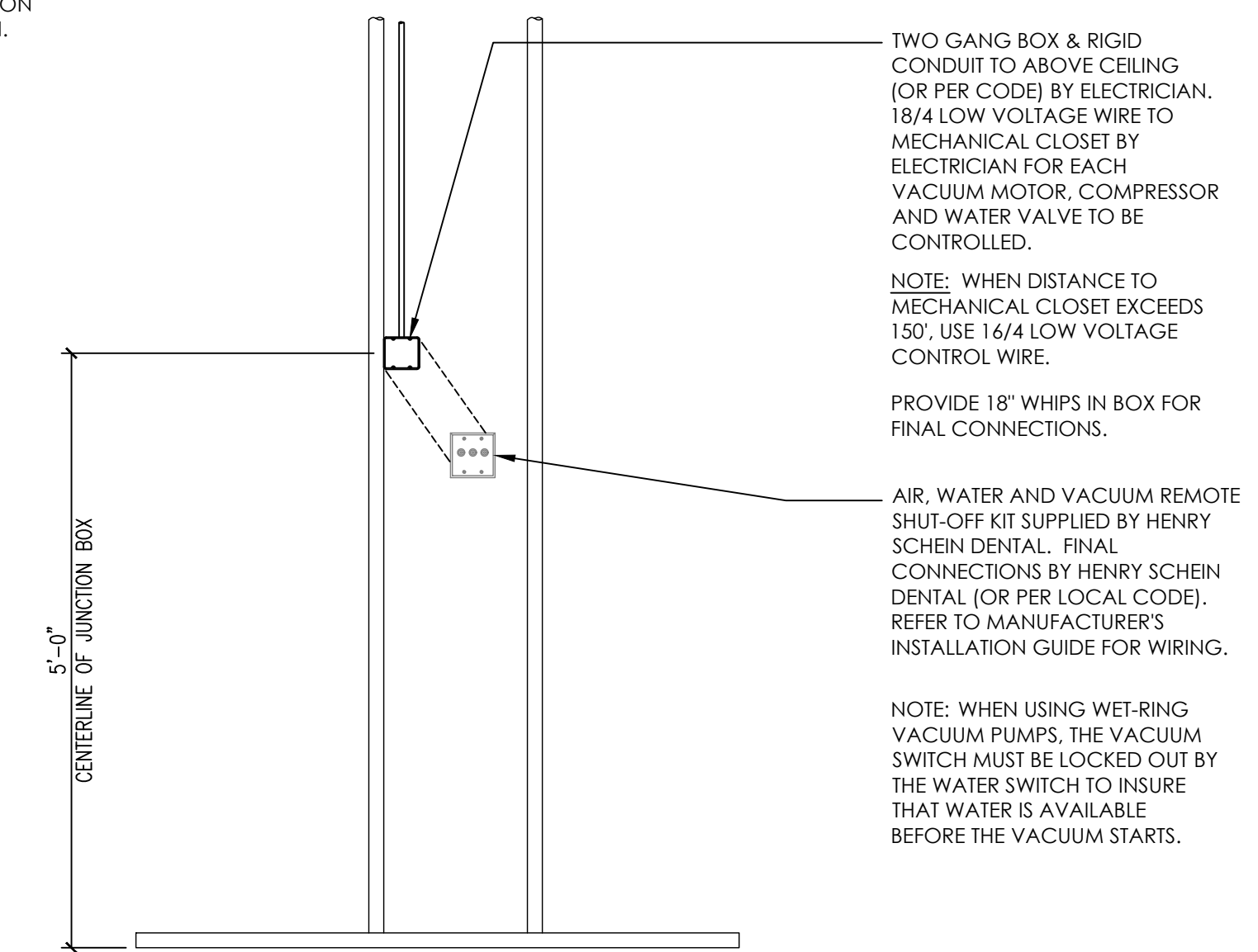
DETAIL PROVIDED FOR UTILITY REQUIREMENTS.
REFER TO MANUFACTURER'S INSTALLATION
GUIDE FOR ADDITIONAL INFORMATION.



30 AIR TECHNIQUES REMOTE WATER CONTROL VALVE
NOT TO SCALE

FOLLOW LOCAL CODES FOR ALL WORK.

DETAIL PROVIDED FOR UTILITY REQUIREMENTS.
REFER TO MANUFACTURER'S INSTALLATION
GUIDE FOR ADDITIONAL INFORMATION.



32 MECHANICAL REMOTE SHUT-OFF (3 SWITCH)
NOT TO SCALE