

## PLANT SCHEDULE MAIN

TREES	QTY	BOTANICAL NAME	COMMON NAME	SIZE	REMARKS
ATW	5	Acer truncatum x platanoideis 'Warrenred'	Pacific Sunset® Maple	2" cal.	matching, limbed up to approx. 6 ft.
CEW	1	Cornus x 'Eddie's White Wonder'	Eddie's White Wonder Dogwood	1.5" cal.	single stem, B&B, matching, full
ZSGV	3	Zelkova serrata 'Green Vase'	Green Vase Japanese Zelkova	2" cal.	matching, limbed up to approx. 6 ft.

SHRUBS	QTY	BOTANICAL NAME	COMMON NAME	SIZE	REMARKS
AUC	6	Arbutus unedo 'Compacta'	Compact Strawberry Tree	5 gal.	matching, full
EUAC	22	Euonymus alatus 'Compactus'	Compact Burning Bush	5 gal.	matching, full
ICC	18	Ilex crenata 'Compacta'	Dwarf Japanese Holly	3 gal.	matching, full
NDL	25	Nandina domestica 'Lemon-Lime'	Lemon-Lime Heavenly Bamboo	3 gal.	matching, full
PLO	12	Prunus laurocerasus 'Otto Luyken'	Otto Luyken English Laurel	5 gal.	matching, full
RHU	7	Rhododendron x 'Unique'	Unique Rhododendron	5 gal.	matching, full
VID	7	Viburnum davidii	David Viburnum	3 gal.	matching, full
VTS	14	Viburnum tinus 'Spring Bouquet'	Spring Bouquet Laurustinus	5 gal.	matching, full

GROUND COVERS	QTY	BOTANICAL NAME	COMMON NAME	SIZE	REMARKS
COSK	51	Cornus sericea 'Kelsey'	Dwarf Red Twig Dogwood	3 gal.	matching, full
NAK	44	Narcissus x 'King Alfred'	King Alfred Daffodil	Bulb	matching, full
PEAH	34	Pennisetum alopecuroides 'Harmeln'	Harmeln Fountain Grass	1 gal.	matching, full
PLMV	36	Prunus laurocerasus 'Mount Vernon'	Mount Vernon English Laurel	1 gal.	matching, full
RUC	50	Rubus calycinoides	Creeping Bramble	4" pots	matching, full
RFG	20	Rudbeckia fulgida sullivanii 'Goldsturm'	Goldsturm Coneflower	1 gal.	

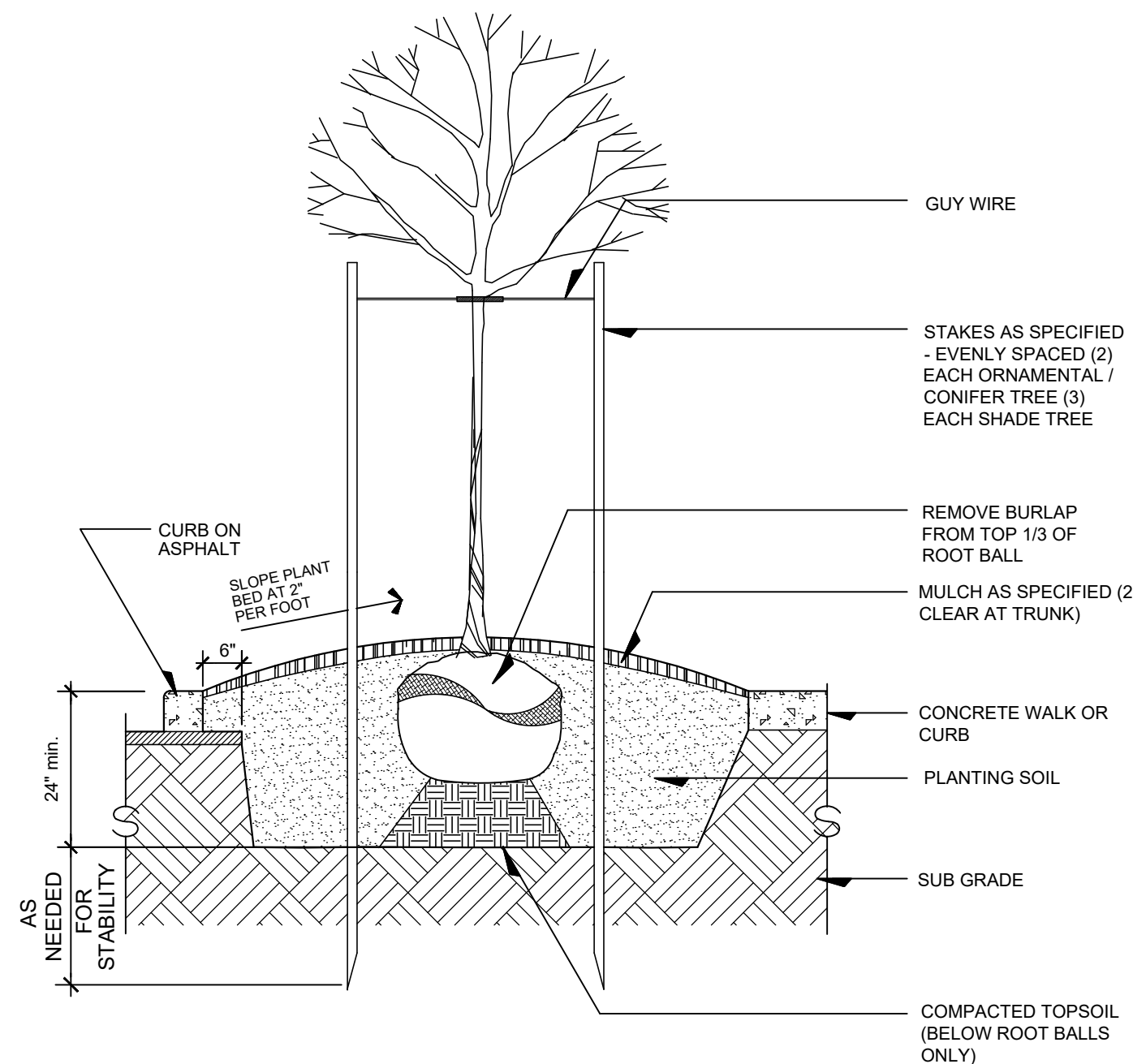
PLANT SCHEDULE STORMWATER PLANTER (860 SF - 860 TOTAL GROUND COVER PLANTS PROVIDED)					
GROUND COVERS	QTY	BOTANICAL NAME	COMMON NAME	SIZE	REMARKS
CAM	102	Carex morrowii 'Ice Dance'	Ice Dance Japanese Sedge	4" pots	matching, full, 12" o.c.
CAO	356	Carex obnupta	Slough Sedge	4" pots	matching, full, 12" o.c.
JUP	402	Juncus patens	California Gray Rush	4" pots	matching, full, 12" o.c.

## LANDSCAPE GUIDELINES

- A. SOIL PREPARATION
- PLANT BEDS
1. FINISHED ELEVATION OF SUB-BASE TO BE 18" MINIMUM BELOW FINISHED GRADE.
  2. TILL SUBGRADE THOROUGHLY TO A DEPTH OF 8" MINIMUM PRIOR TO PLACEMENT OF TOPSOIL.
  3. PLACE 18" MINIMUM OF IMPORTED SANDY LOAM TOPSOIL OVER TILLED SUBGRADE. ADD 4" OF ORGANIC MATERIAL AND 15-5-10-10 FERTILIZER TO TOPSOIL AT THE RATE OF 20 LBS. PER 1000 SF. ROTO-TILL AMENDMENTS AND TOPSOIL TO A DEPTH OF 8" MINIMUM.
  4. PROVIDE 3" OF SHREDDED FIR BARK MULCH OVER ALL PLANT BEDS.
- STORMWATER PLANTER
1. STORMWATER GROWING MEDIUM TO BE REXIUS PRO-SWALE WITH A DEPTH OF 12".
- B. PLANT MATERIAL
1. PROVIDE ONLY HEALTHY, FULL PLANT MATERIAL AT SIZES INDICATED.
  2. PLANT SUBSTITUTIONS TO BE APPROVED BY LANDSCAPE ARCHITECT.
  3. PLANT LAYOUT TO BE APPROVED BY LANDSCAPE ARCHITECT PRIOR TO INSTALLATION.
- C. TREE PROTECTION
1. PROTECT ROOT ZONE OF EXISTING TREES TO REMAIN.
  2. CUT NO ROOT LARGER THAN 2" WITHOUT APPROVAL BY LANDSCAPE ARCHITECT.

## IRRIGATION SYSTEM NOTES

1. IRRIGATION TO BE PROVIDED BY AUTOMATICALLY CONTROLLED, UNDERGROUND IRRIGATION SYSTEM.
2. IRRIGATION SYSTEM TO BE DESIGN BUILD BY CONTRACTOR.
3. HEAD LAYOUT IS TO MINIMIZE OVERSPRAY ONTO PAVED SURFACES.
4. MAIN LINE IS TO HAVE MANUAL DRAIN VALVES, AT LOW POINTS.
5. ALL IRRIGATION PIPING UNDER PAVING TO BE LOCATED IN SCHEDULE 40 PVC PIPE SLEEVES.

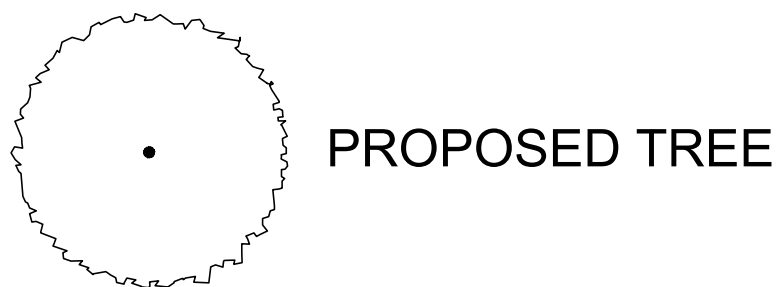


NOTE  
MARK NORTH SIDE OF TREE AT NURSERY. ROTATE TREE TO FACE NORTH WHEN PLANTING.

1 TREE PLANTING AT PARKING AREAS  
LA.1 SECTION

SCALE: 1/2" = 1'-0"

## PLANTING LEGEND



PROPOSED TREE



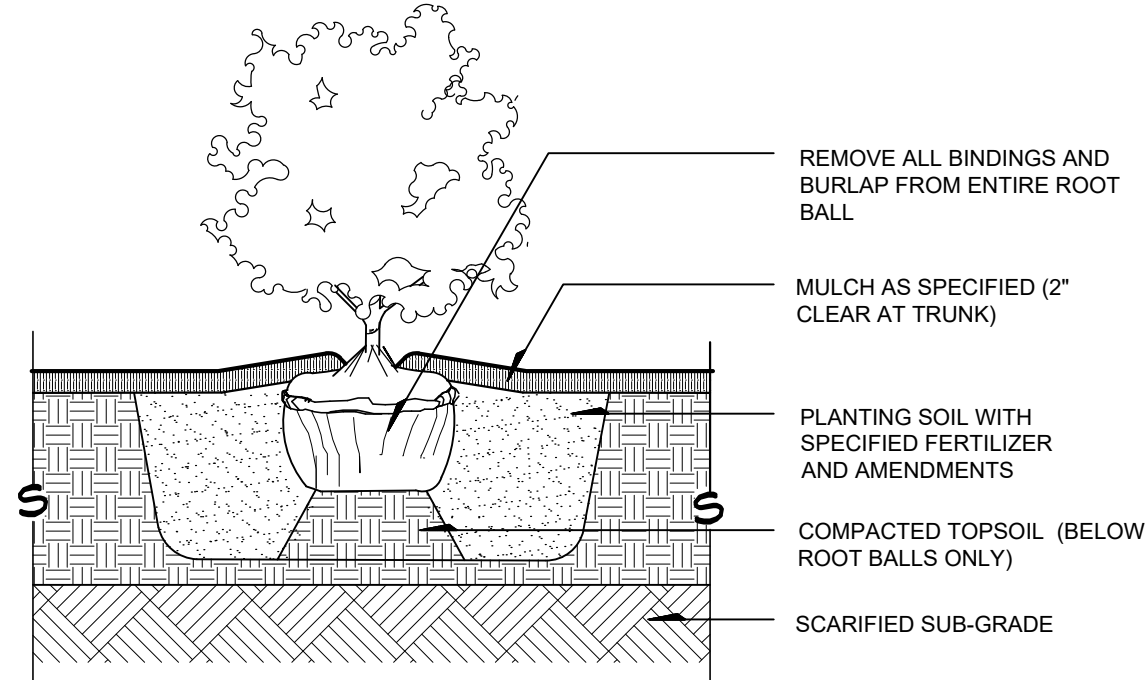
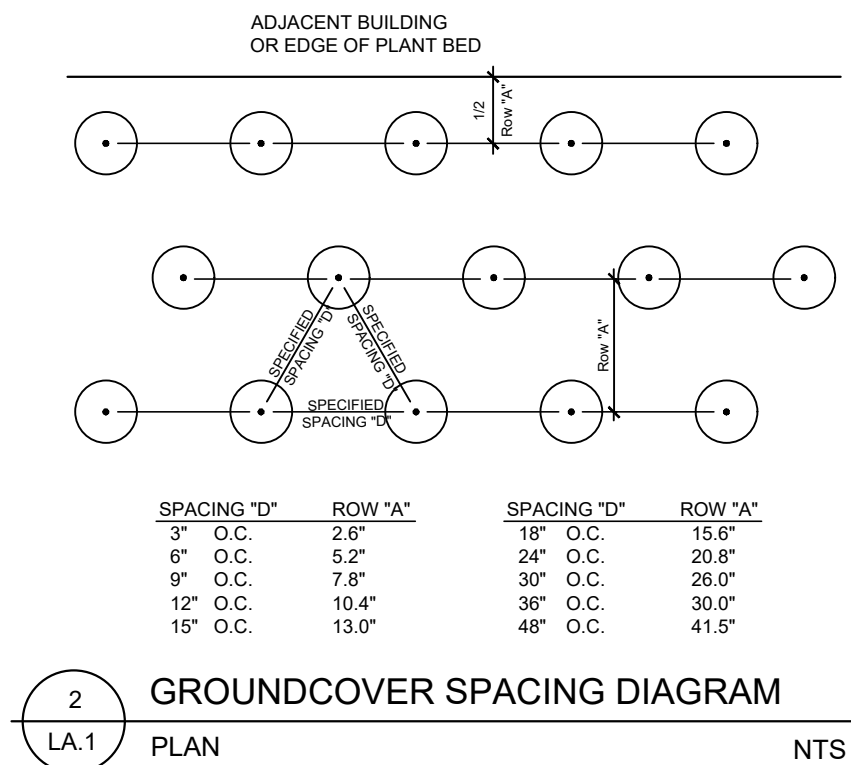
EXISTING TREE  
TO BE REMOVED



SHRUBS

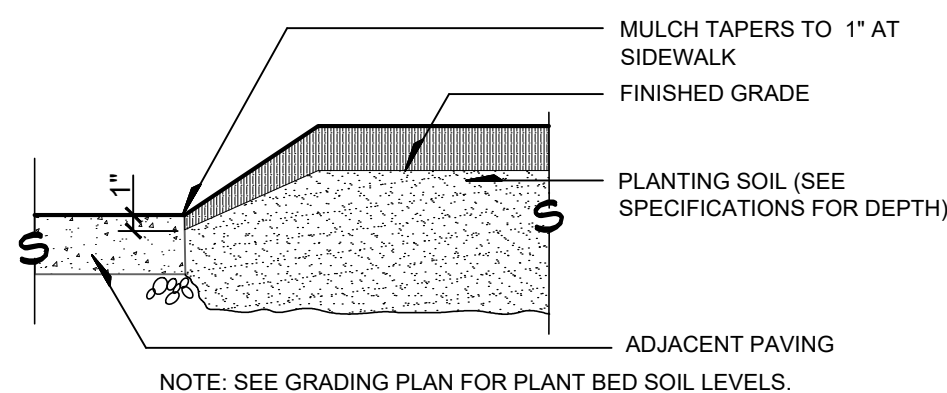
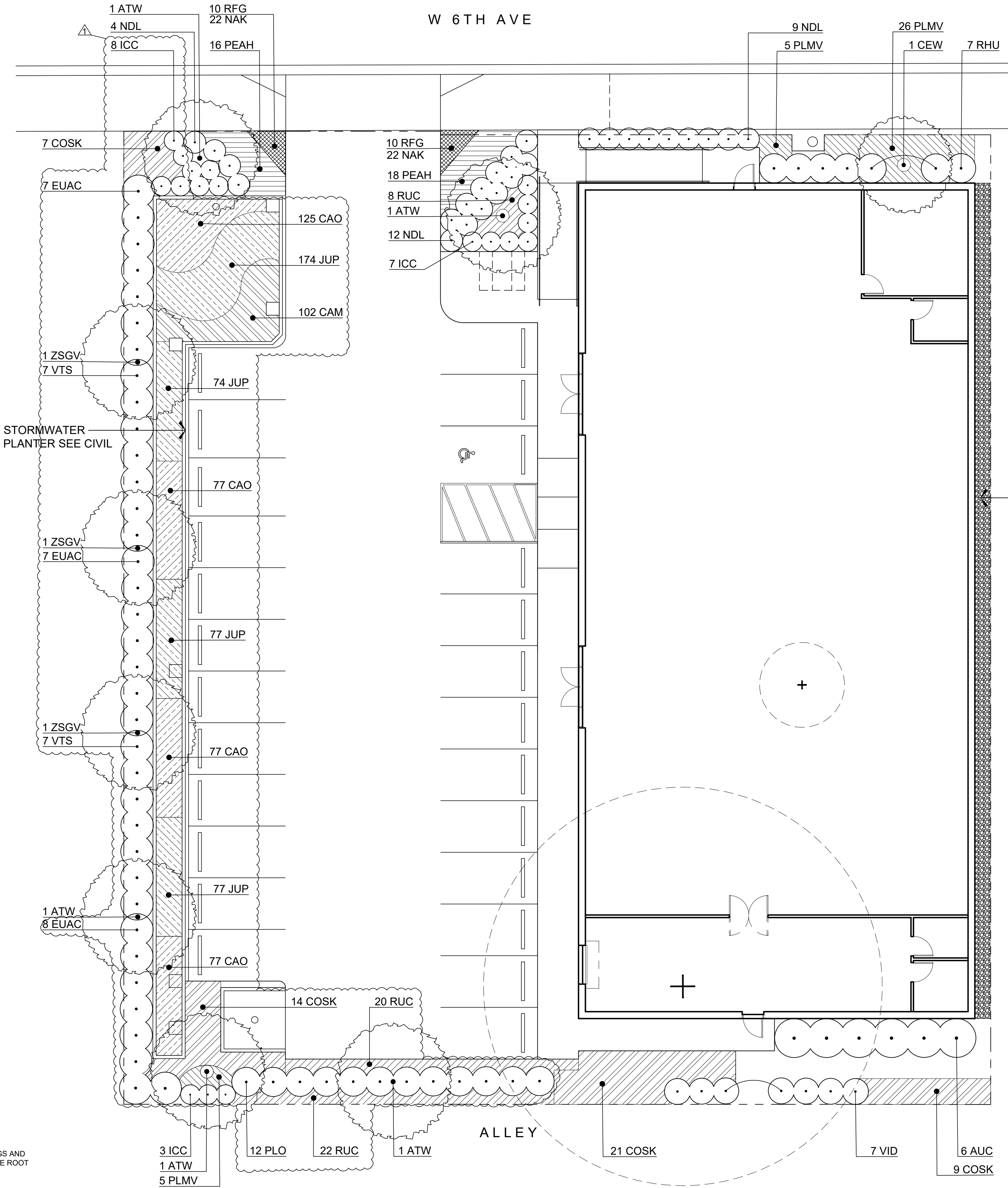


GROUND COVER



3 TYPICAL SHRUB PLANTING  
LA.1 SECTION

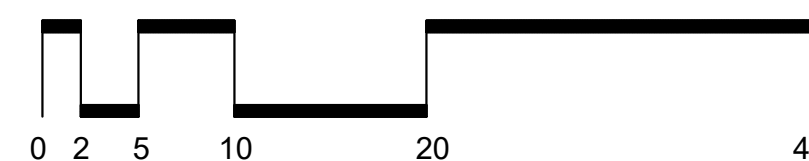
SCALE: 1/2" = 1'-0"



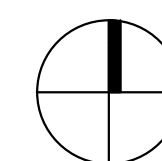
4 PLANT BED EDGE AT PAVEMENT  
LA.1 SECTION

SCALE: 1/2" = 1'-0"

## LANDSCAPE PLAN



SCALE: 1" = 10'-0"



NORTH

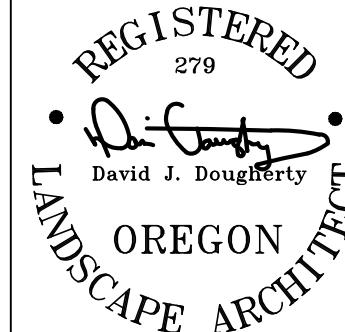


**DOUGHERTY  
LANDSCAPE  
ARCHITECTS**

474 Willamette Street  
Suite 305  
Eugene, Oregon 97401

P 541.683.5803  
F 541.683.8183

www.DLAdesign.com



MINI PET MART

974 W 6th Ave Eugene OR 97402

Date: 11.08.22  
Drawn By: DT  
Checked By: DJD, EP  
Submission:

Revisions  
1 02.16.23  
2  
3  
4

**LA.1**

DLA INC. COPYRIGHT 2023