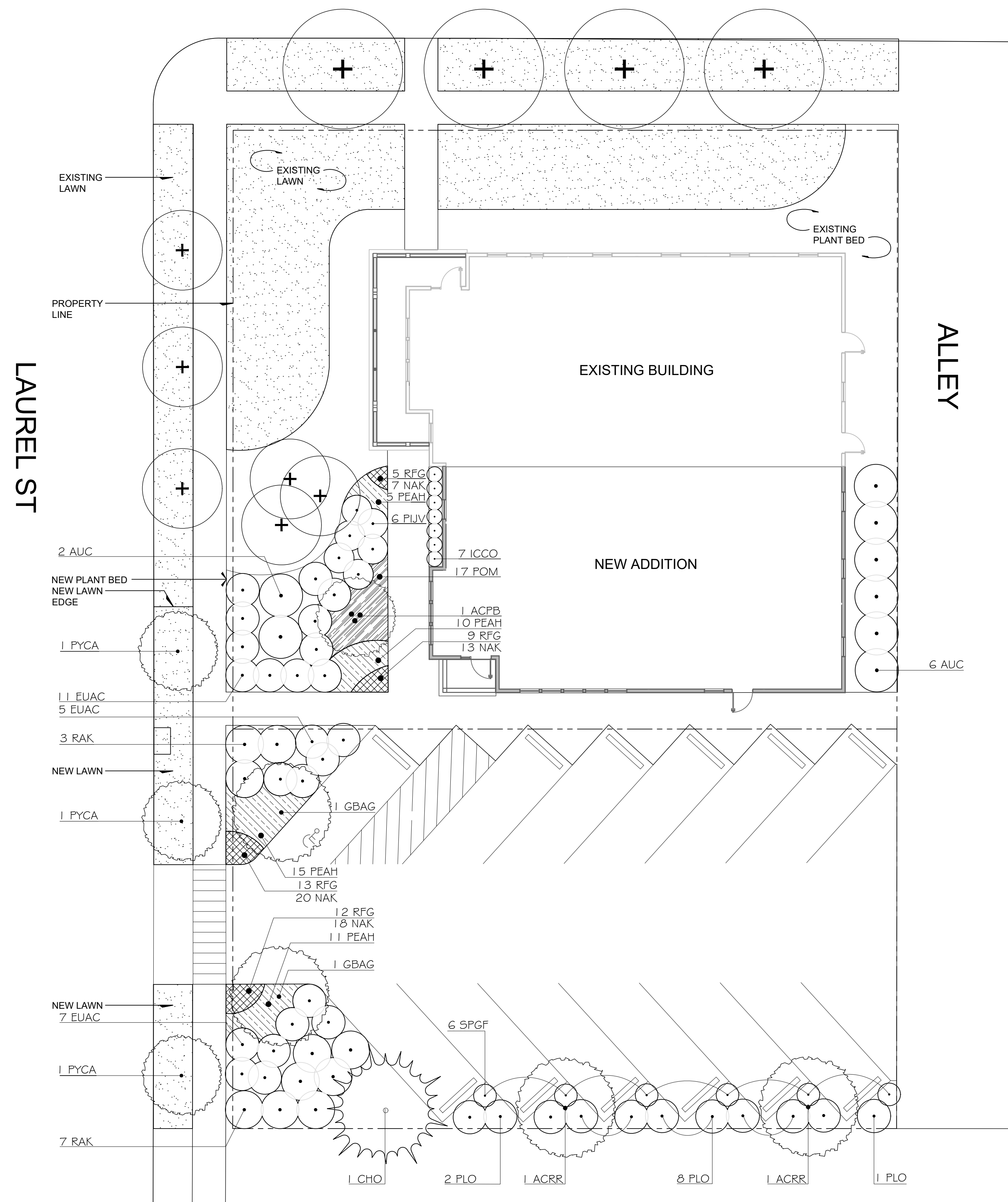


W 6TH AVE



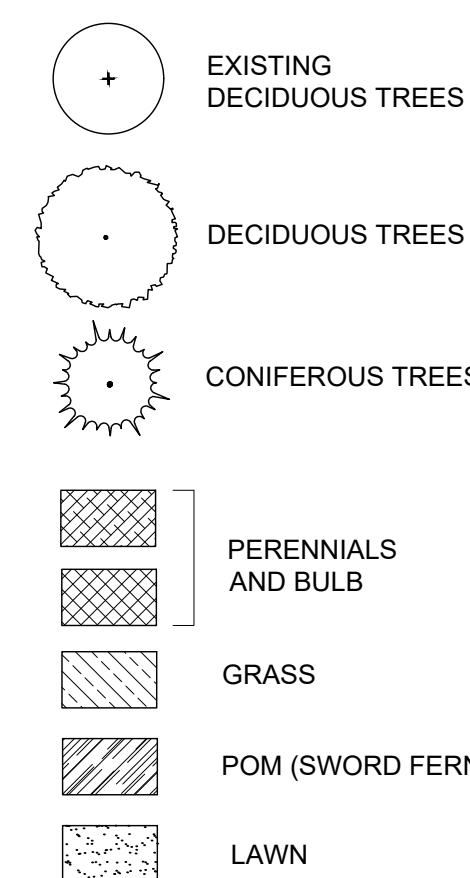
PLANT SCHEDULE

TREES	QTY	BOTANICAL NAME	COMMON NAME	CONT	REMARKS
ACPB	1	Acer palmatum 'Bloodgood'	Bloodgood Japanese Maple	1.75" cal.	Multi-stem, B&B, matching, full
ACRR	2	Acer rubrum 'Red Sunset'	Red Sunset Maple	2" cal.	Matching, limbed up to approx. 6 ft.
CHO	1	Chamaecyparis obtusa	Hinoki False Cypress	8" ht.	Matching, full
GBAG	2	Ginkgo biloba 'Autumn Gold' TM	Autumn Gold Maidenhair Tree	2" cal.	Matching, male only, limbed up to approx. 6 ft.
PYCA	3	Pyrus calleryana 'Aristocrat' TM	Aristocrat Flowering Pear	2" cal.	Single stem, B&B, matching, full

SHRUBS	QTY	BOTANICAL NAME	COMMON NAME	SIZE	REMARKS
AUC	8	Arbutus unedo 'Compacta'	Dwarf Strawberry Tree	5 gal	Matching, full
EUAC	23	Euonymus alatus 'Compactus'	Burning Bush	3 gal	Matching, full
ICCO	7	Ilex crenata 'Convexa'	Convex-leaved Japanese Holly	3 gal	Matching, full
PIJV	6	Pteris japonica 'Valley Rose'	Valley Rose Japanese Pteris	3 gal	Matching, full
PLO	11	Prunus laurocerasus 'Otto Luyken'	Otto Luyken English Laurel	5 gal	Matching, full
RAK	10	Rhododendron x 'Anah Krusche'	Anah Krusche Rhododendron	5 gal	Matching, full
SPGF	6	Spiraea x bumalda 'Goldflame'	Goldflame Spiraea	3 gal	Matching, full

GROUND COVERS	QTY	BOTANICAL NAME	COMMON NAME	CONT	REMARKS
NAK	58	Narcissus x 'King Alfred'	King Alfred Daffodil	bulb	Matching, full, 12" o.c.
PEAH	41	Pennisetum alopecuroides 'Hamelin'	Hamelin Dwarf Fountain Grass	1 gal	Matching, full, 24" o.c.
POM	17	Polystichum munium	Western Sword Fern	1 gal	Matching, full, 24" o.c.
RFG	39	Rudbeckia fulgida 'Goldstrum'	Coneflower	1 gal	Matching, full, 15" o.c.

LEGEND



GENERAL NOTES

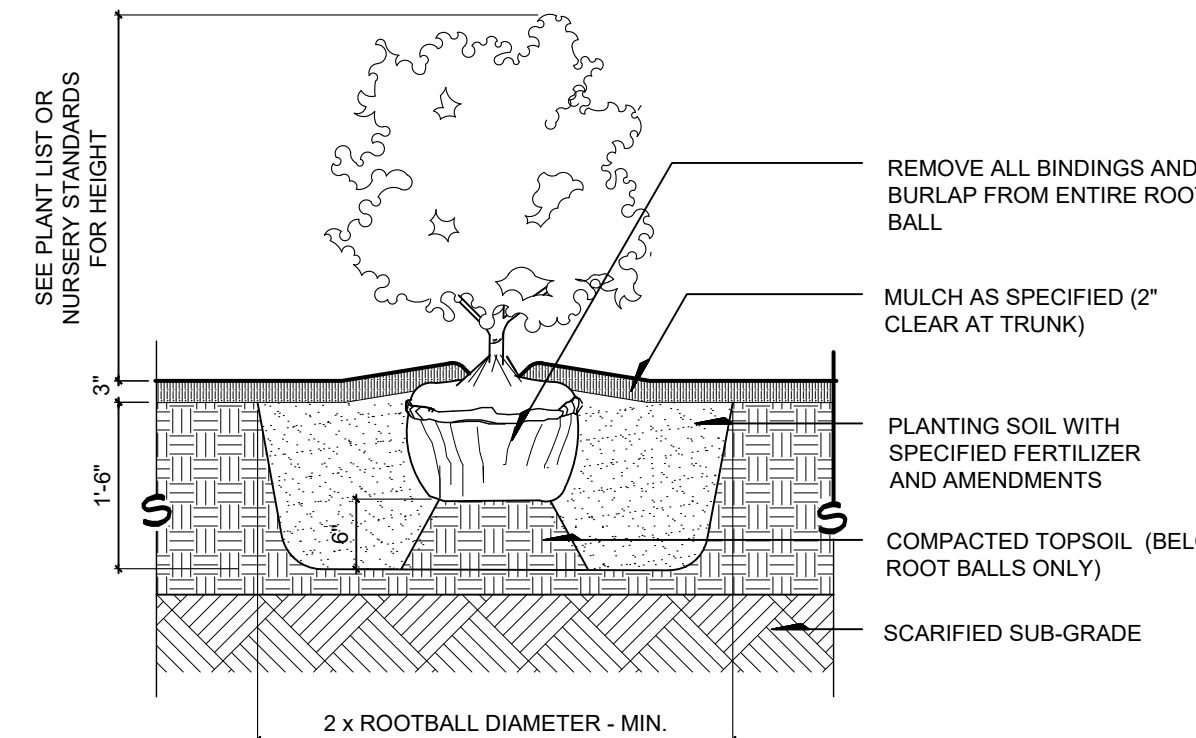
- SEE ARCHITECTURE PLANS FOR SITE LAYOUT
- PLANTINGS AS DESIGNED ARE INTENDED TO MEET SPECIFIC REQUIREMENTS. NO SUBSTITUTIONS OR SIZE CHANGES PERMITTED WITHOUT APPROVAL BY LANDSCAPE ARCHITECT.

IRRIGATION SYSTEM DESCRIPTION

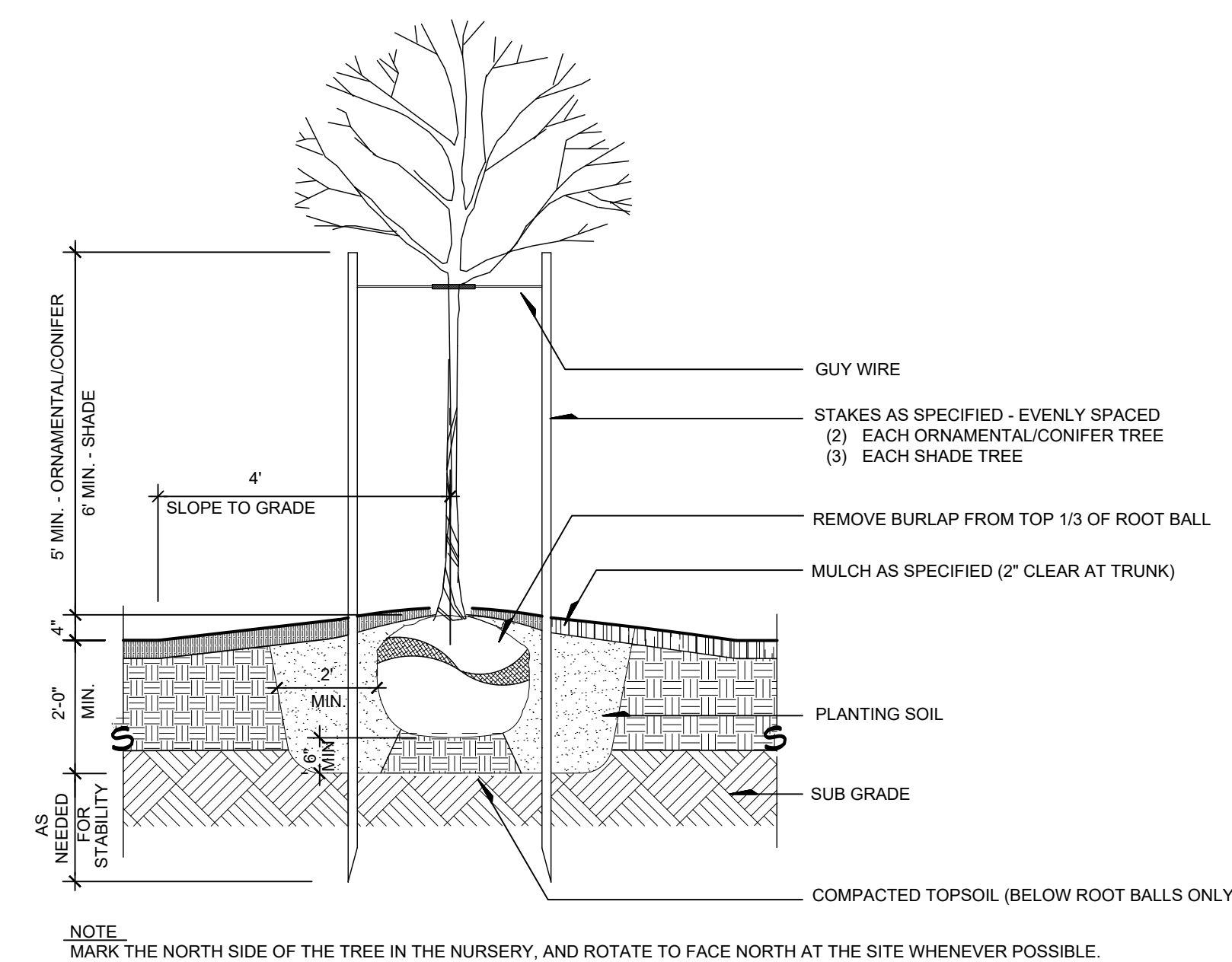
- IRRIGATION SYSTEM TO BE DESIGN BUILD BY CONTRACTOR.
- AUTOMATIC, UNDERGROUND IRRIGATION SYSTEM WILL BE PROVIDED FOR NEW LANDSCAPE AREAS.
- SYSTEM TO PROVIDE HEAD TO HEAD COVERAGE.
- SYSTEM IS TO PROVIDE SEPARATE ZONES FOR LAWN AND SHRUB AREAS.
- SYSTEM TO PROVIDE SEPARATE ZONES FOR DIFFERENT SOLAR ORIENTATIONS.
- HEAD LAYOUT WILL MINIMIZE OVERSPRAY ONTO PAVED SURFACES.
- MAIN LINE IS TO HAVE MANUAL DRAIN VALVES.

LANDSCAPE GUIDELINES

- A. VERIFICATIONS
- VERIFY LOCATION OF ALL UTILITIES AND PROTECT DURING CONSTRUCTION.
 - PROTECT ALL EXISTING TREES, VEGETATION AND UTILITIES TO REMAIN DURING CONSTRUCTION.
- B. PRODUCTS
- TOPSOIL AT PLANT BEDS: IMPORTED SANDY LOAM WITH 10% HUMUS AND CHARACTERISTIC OF LOAMS OF THE AREA. FREE OF ROCK, SUBSOIL, CLODS, LUMPS, PLANTS, ROOTS, STICKS, WEEDS, SEEDS AND OTHER DELETERIOUS SUBSTANCES.
 - SOIL AMENDMENTS
 - FERTILIZER: 15-5-10-10 COMMERCIAL FERTILIZER.
 - ORGANIC MATERIAL: 'GARDEN COMPOST' AVAILABLE FROM REXIUS OR LANE FOREST PRODUCTS.
 - MULCH: SHREDDED FIR BARK; SCREENED AT 5/8" MINUS AT PLANT BEDS.
 - PLANTING TABLETS: SCOTT'S AGRIFORM FERTILIZER TABLETS.
 - PLANT MATERIAL
 - PROVIDE ONLY HEALTHY, FULL PLANT MATERIAL AT SIZES INDICATED.
 - PLANT SUBSTITUTIONS TO BE APPROVED BY LANDSCAPE ARCHITECT.
 - MATERIALS
 - STAKES: SOFTWOOD LUMBER, POINTED END, UNIFORMLY SIZED, 2" X 2" MIN. CAPABLE OF AT LEAST 2 YEARS BURIAL. STAKES TO BE PAINTED BLACK.
 - GUY WIRES: NO. 10 GA. ANNEALED, GALVANIZED STEEL WIRE.
- C. SOIL PREPARATION
- PLANT BEDS
- AT PLANT BEDS: SCARIFY EXISTING TOPSOIL THOROUGHLY TO A DEPTH OF 3" MINIMUM PRIOR TO PLACEMENT OF NEW TOPSOIL.
 - PLACE NEW TOPSOIL OVER TILLED EXISTING TOPSOIL AS NEEDED TO MATCH EXISTING ADJACENT GRADE. FILL IN ALL LOW AREAS AND CROWN PLANT BEDS TO CENTER.
 - ADD 3" OF ORGANIC MATERIAL AND 15-5-10-10 FERTILIZER TO TOPSOIL AT THE RATE OF 20 LBS. PER 1000 SF. MIX AMENDMENTS AND TOPSOIL TO A DEPTH OF 6" MINIMUM. CROWN SOIL TO THE CENTER OF PLANT BEDS.
 - PROTECT EXISTING TREE ROOTS DURING SCARIFICATION, PLACEMENT AND TILLING. TILL BY HAND AT PLANT BEDS ADJACENT TO EXISTING TREES TO REMAIN. DO NOT CUT ANY ROOTS LARGER THAN 2".
 - COMPACTION: PLACE SOIL IN LAYERS. COMPACT EACH LAYER AT 85 PERCENT.
- D. PLANTING
- SET PLANTS IN PITS OR BEDS, PARTLY FILLED WITH PREPARED PLANT MIX, AT A MIN. OF 6" DEPTH UNDER EACH PLANT. REMOVE BURLAP, ROPES AND WIRES FROM ROOT BALLS.
 - APPLY PLANTING TABLETS PER MANUFACTURER'S HIGH RATES.
 - BACKFILL SOIL MIXTURE AND COMPACT IN LAYERS. MAINTAIN PLANT MATERIAL IN VERTICAL POSITION.
 - SATURATE SOIL WITH WATER WHEN PIT OR BED IS HALF FULL WITH TOPSOIL AND AGAIN WHEN FULL.
- E. MULCHING: MULCH ALL PLANT BEDS TO A MINIMUM DEPTH OF 3" WITHIN 24 HOURS OF PLANTING. TAPER MULCH TO 1" AT PAVING EDGES.
- F. LAWN: RESTORE LAWN AT AREA OF DISTURBANCE. PLACE IMPORTED TOPSOIL AS NEEDED TO CREATE SEED BED WITH SMOOTH TRANSITION TO ADJACENT GRADE. FILL IN ALL LOW AREAS. SEED AT MANUFACTURER'S HIGH RATE.
- G. NOTIFY LANDSCAPE ARCHITECT 48 HOURS PRIOR TO PLANT MATERIAL LAYOUT REVIEW.
- H. MAINTENANCE: CONTRACTOR TO MAINTAIN ALL PLANT MATERIAL THROUGH FINAL COMPLETION INCLUDING WEEDING, PRUNING, MAINTAINING GUYS AND STAKES AND REPLACEMENT OF MULCH.
- I. PLANT LIST QUANTITIES ARE FOR CONTRACTOR CONVENIENCE ONLY. CONTRACTOR TO VERIFY ACTUAL QUANTITIES SHOWN ON PLAN.
- J. PROVIDE ONE YEAR WARRANTY FOR ALL PLANT MATERIAL. ACTIVE UPON APPROVAL OF SUBSTANTIAL COMPLETION.



TYPICAL SHRUB PLANTING SECTION SCALE: 1/2" = 1'-0"



TYPICAL TREE PLANTING SECTION SCALE: 1/2" = 1'-0"

PLANTING PLAN

