



WILLAMETTE ARCHITECTURE 360

800 WILLAMETTE ST., SUITE 600
EUGENE, OR 97401
(541) 636-4365
WAS360USA.COM

STAMP

PROJECT NAME

OPEN DOOR DENTAL

1100 N.E. E STREET
GRANTS PASS, OR 97526

REVISIONS

DRAWING TITLE

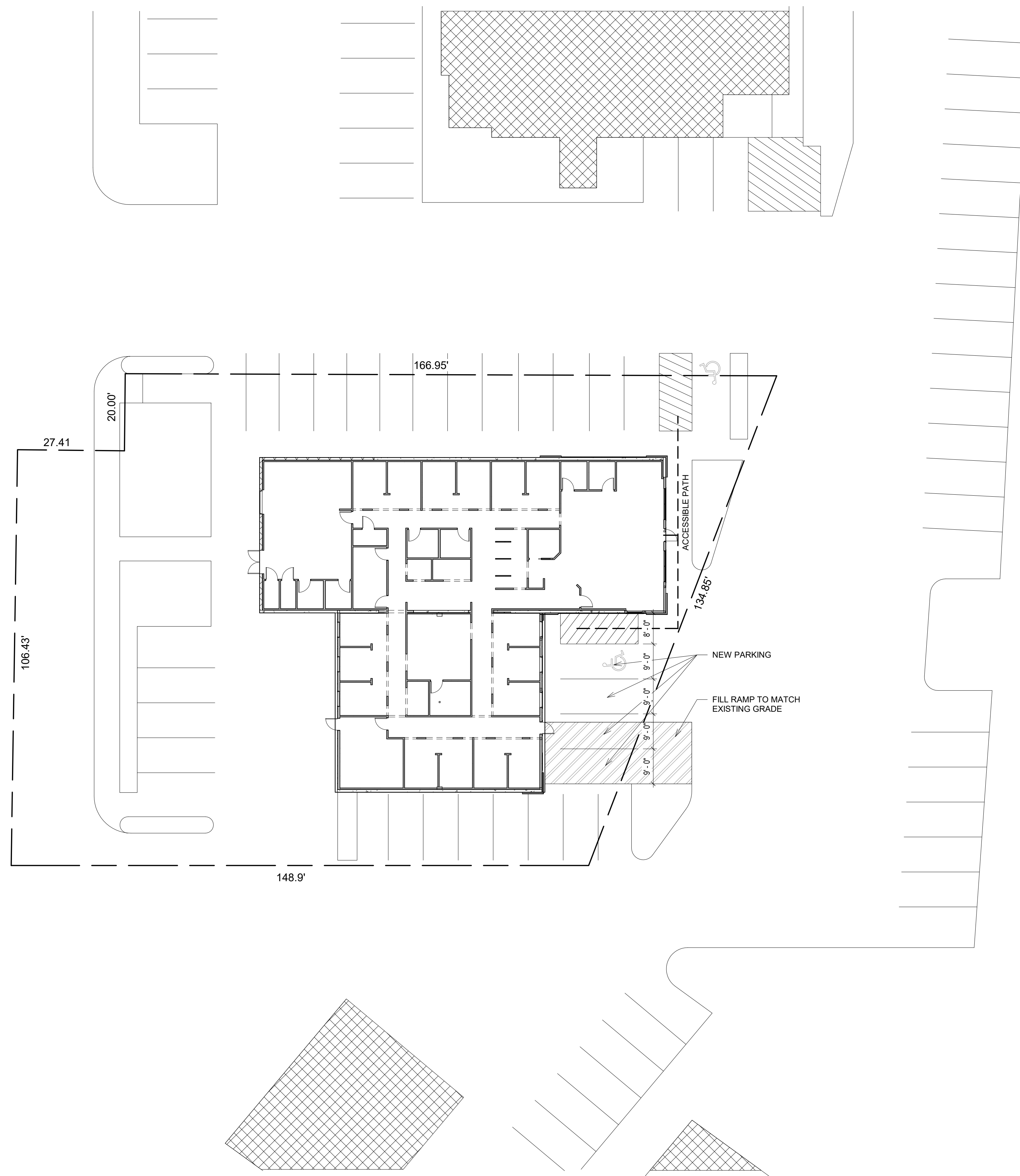
SITE PLAN

SHEET ID

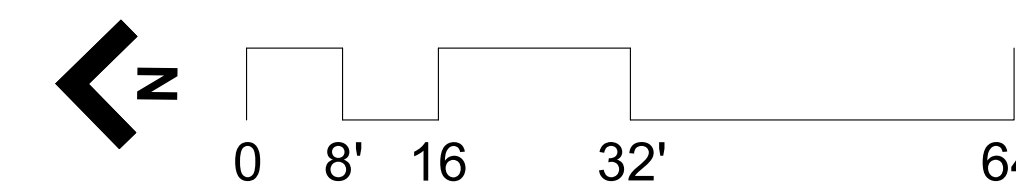
A101

DATE

01/17/2021



1 FLOOR PLAN-NEW
1/16" = 1'-0"
DIAGRAMATIC ONLY.
NOT TO BE USED AS
AN ACCURATE SURVEY.



STAMP
 PROJECT NAME

OPEN DOOR DENTAL
 1100 N.E. E STREET
 GRANTS PASS, OR 97526

REVISIONS

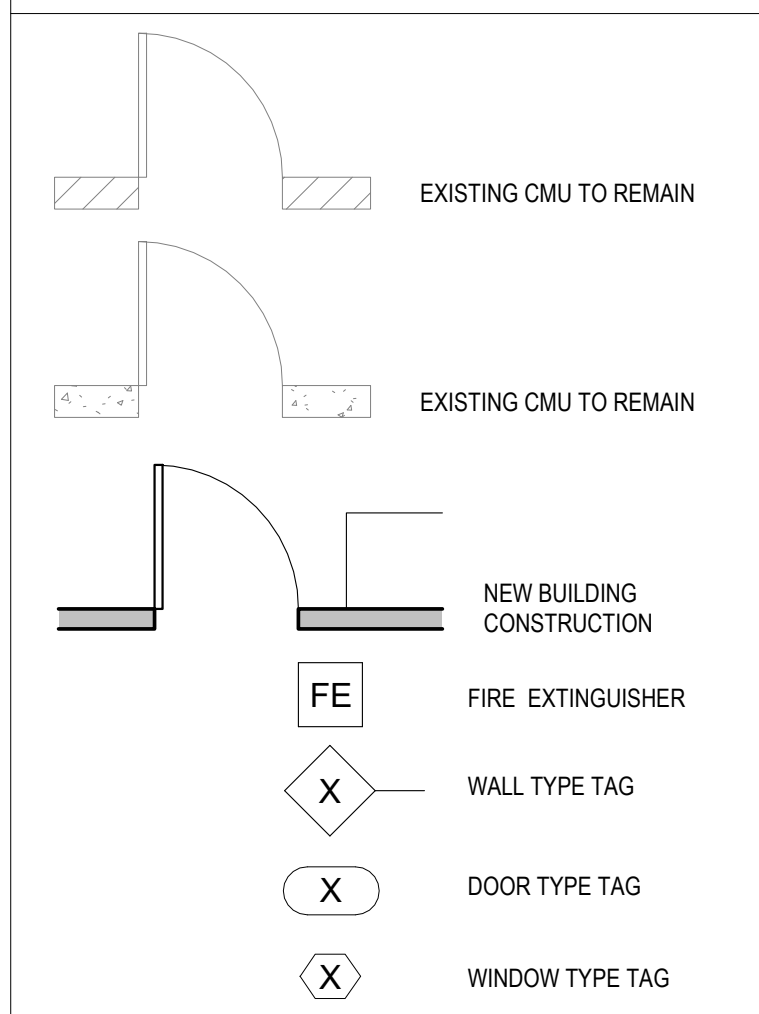
DRAWING TITLE

FLOOR PLAN

SHEET ID
A103

DATE
 01/17/2021

PLAN LEGEND



GENERAL NOTES - FLOOR PLAN

- WALL DIMENSIONS FROM EXISTING WALLS ARE FROM EXISTING FACE OF FINISH. DIMENSIONS TO NEW WALLS ARE FROM FACE OF STUD.
- PROVIDE AND COORDINATE BLOCKING/STRAPPING FOR ALL WALL MOUNTED CASEWORK, EQUIPMENT, SIGNAGE, FURNITURE, ETC AS REQUIRED. SEE DENTAL CONSULTANT DRAWINGS FOR LOCATIONS.
- FLOOR TRANSITION WITH 0" - 1/2" HEIGHT DIFFERENTIAL TO HAVE TRANSITION STRIP WITH 1:2 SLOPE. BEYOND 1/2", TRANSITION STRIP TO TO SLOPE 1:12

DOOR NOTES

- SIGNS SHALL BE INSTALLED ON WALL ADJACENT TO TOILET ROOM DOOR COMPLYING WITH ALL FEDERAL, STATE, AND LOCAL REGULATIONS, INCLUDING USE (SEX), AS WELL AS SYMBOL OF ACCESSIBILITY.
- G.C. TO PROVIDE READILY VISIBLE DURABLE SIGN POSTED ON EGRESS SIDE ON OR ADJACENT TO DOOR STATION. THIS DOOR TO REMAIN UNLOCKED WHEN BUILDING IS OCCUPIED. SIGN SHALL BE IN LETTERS 1 INCH HIGH ON CONTRASTING BACKGROUND AT ENTRANCE.
- ALL DOORS SHALL COMPLY TO ANSI A117.1.4.13.9, LATEST ED.
- DOOR CLOSERS SHALL NOT REQUIRE GREATER THAN 5 LBS OF FORCE TO OPERATE. DOOR CLOSERS SHALL TAKE AT LEAST 5 SECONDS TO MOVE FROM 90° TO 12°.

WALL TYPE LEGEND

- 1 3-5/8" METAL STUD @ 16" O.C.
5/8" GYP. WALLBOARD BOTH SIDES
DET: 1/D/103
- 2 5-1/2" METAL STUD @ 16" O.C.
5/8" GYP. WALLBOARD BOTH SIDES
DET: 2/D/103
- 3 EXISTING STORE FRONT SYSTEM
- 4 EXISTING 8" CONCRETE
- 5 EXISTING 8" CMU
- 6 8" WOOD STUD @ 16" O.C.
5/8" GYP. WALLBOARD INTERIOR,
STUCCO EXTERIOR, R20 CAVITY INSULATION
DET: 3/D/103
- 7 7/8" METAL CHANNEL @ 16" O.C.
5/8" GYP. WALLBOARD INTERIOR
DET: 4/D/103
- 8 3-5/8" METAL STUD @ 16" O.C.
5/8" GYP. WALLBOARD INTERIOR,
R13 CAVITY INSULATION. MAINTAIN 1" AIR GAP.
DET: 5/D/103
- 9 3-1/2" WOOD STUD @ 16" O.C.
5/8" GYP. WALLBOARD INTERIOR, SIDING
EXTERIOR, R20 CAVITY INSULATION.
DET: 6/D/103

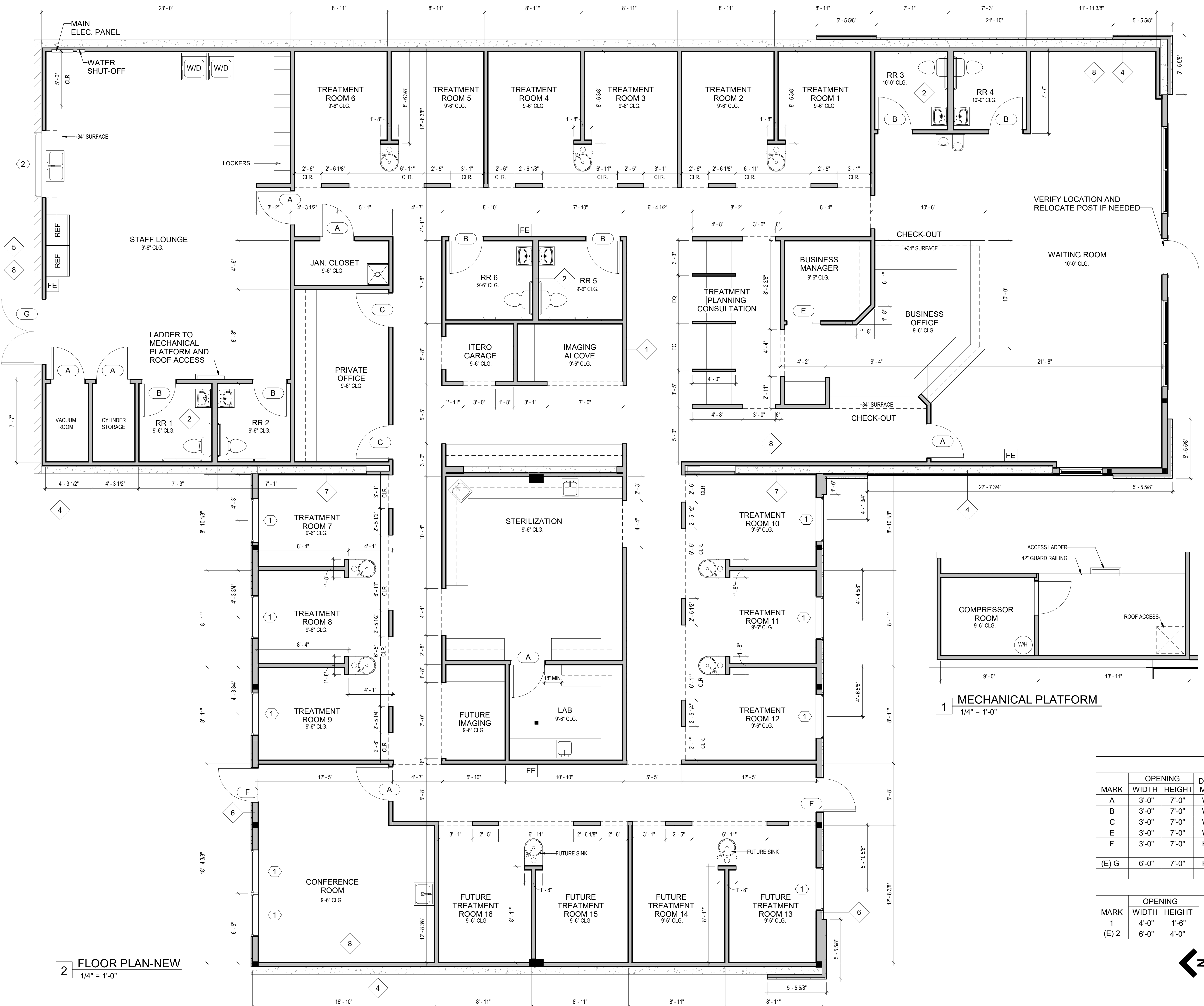
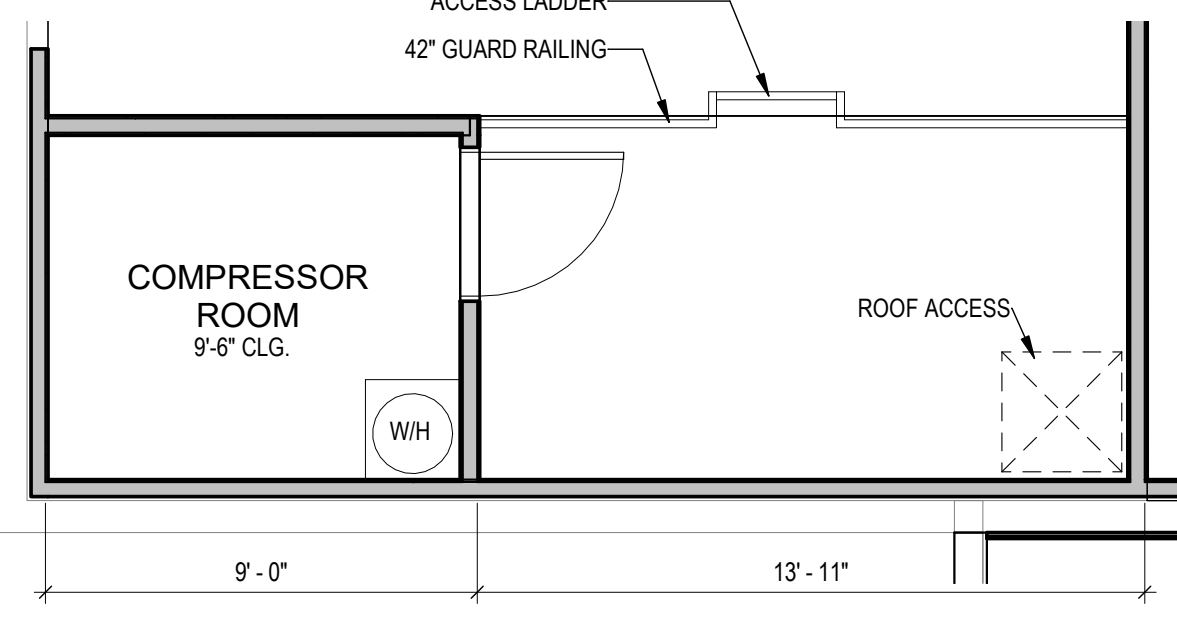
DOOR SCHEDULE

MARK	OPENING WIDTH	OPENING HEIGHT	DOOR MATL	FRAME MATL	HDW SET	NOTES
A	3'-0"	7'-0"	WD	TIMELY	PASSAGE	
B	3'-0"	7'-0"	WD	TIMELY	PRIVACY	
C	3'-0"	7'-0"	WD	TIMELY	ENTRY	
E	3'-0"	7'-0"	WD	TIMELY	PASSAGE	POCKET DOOR
F	3'-0"	7'-0"	HM	HM	ENTRY	
(E) G	6'-0"	7'-0"	HM	HM	ENTRY	EXTERIOR/PANIC BAR

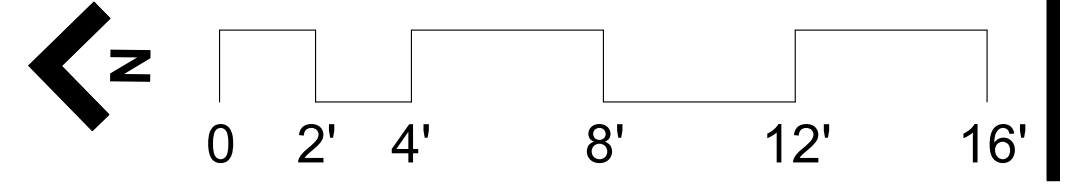
WINDOW SCHEDULE

MARK	OPENING WIDTH	OPENING HEIGHT	OPERATION	NOTES
1	4'-0"	1'-6"	FIXED	
(E) 2	6'-0"	4'-0"	FIXED	

1 MECHANICAL PLATFORM
 1/4" = 1'-0"



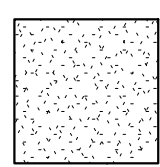
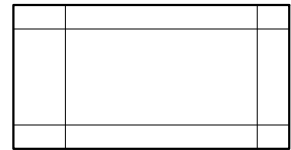
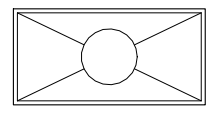
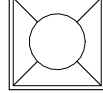


2 FLOOR PLAN-NEW
 1/4" = 1'-0"





1 REFLECTED CEILING PLAN
1/4" = 1'-0"

RCP SYMBOL LEGEND

-  NEW GYPSUM BOARD CEILING
-  NEW 2'-0" x 4'-0" SUSPENDED ACT CEILING
-  NEW 2'x4' LED LAY IN LIGHT FIXTURE
-  NEW 2'x2' LED LAY IN LIGHT FIXTURE
-  NEW 6" LED RECESSED LIGHT FIXTURE, SEE ELEC
-  NEW EMERGENCY LIGHT FIXTURE / ILLUMINATED EXIT SIGN, SEE ELEC
- EM EMERGENCY LIGHTING

GENERAL RCP NOTES

1. ALL FINISH CEILING HEIGHTS ARE RELATIVE TO FINISHED FLOOR, U.N.O.
2. CENTER LIGHT FIXTURES/J BOXES IN ROOM/CEILING TILE, U.N.O.
3. PROVIDE AND COORDINATE BLOCKING/STRAPPING FOR ALL CEILING AND WALL MOUNTED EQUIPMENT, SIGNAGE, ETC.
4. SEE HVAC PLAN TO COORDINATE CEILING DIFFUSERS, GRILLES, AND FAN LOCATIONS (SHOWN ON THIS DRAWING FOR LOCATION ONLY)
5. ALL CEILING SUSPENSION SYSTEM AND METAL STUD MATERIAL THICKNESS IS DESIGN-BUILD. CONTRACTOR TO COORDINATE METAL STUD MATERIAL THICKNESS AND SPACING OF INDIVIDUAL ELEMENTS TO MEET ALLOWABLE LIMIT CRITERIA. ALL CEILING CONSTRUCTION TO BE IN ACCORDANCE WITH OCSA STANDARD FOR SEISMIC ZONES 3 AND 4 WITH MODIFICATIONS AS NOTED IN ASCE 7-10 STANDARD.
6. LATERAL FORCE BRACING IS REQUIRED FOR CEILINGS OVER 1,000 SF PER OREGON STATEWIDE CODE INTERPRETATION NO. 10-01 CONSTRUCTION REQUIREMENTS OR SUSPENDED CEILING SYSTEMS.
7. ALL LIGHT SWITCHES TO HAVE OCCUPANCY SENSORS TO COMPLY WITH SECTION 505.2 "INTERIOR LIGHTING CONTROLS (MANDATORY)" FROM THE 2014 OREGON EFFICIENCY SPECIALTY CODE.

STAMP

PROJECT NAME

OPEN DOOR DENTAL
1100 N.E. E STREET
GRANTS PASS, OR 97526

REVISIONS

DRAWING TITLE

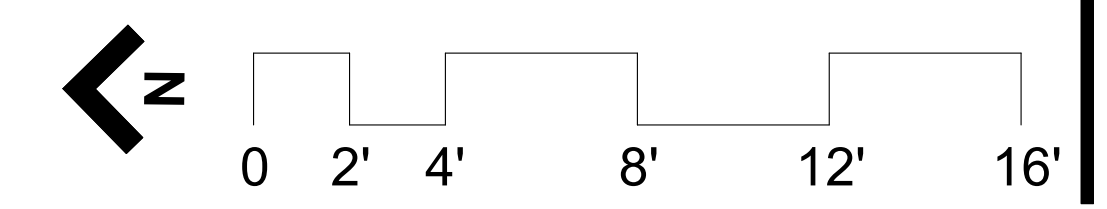
REFLECTED
CEILING PLAN

SHEET ID

A104

DATE

01/17/2021





WILLAMETTE ARCHITECTURE 360

800 WILLAMETTE ST., SUITE 600
EUGENE, OR 97401
(541) 636-4385
WAS30USA.COM

STAMP

PROJECT NAME

OPEN DOOR DENTAL

1100 N.E. E STREET
GRANTS PASS, OR 97526

REVISIONS

DRAWING TITLE


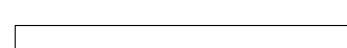
ROOF PLAN

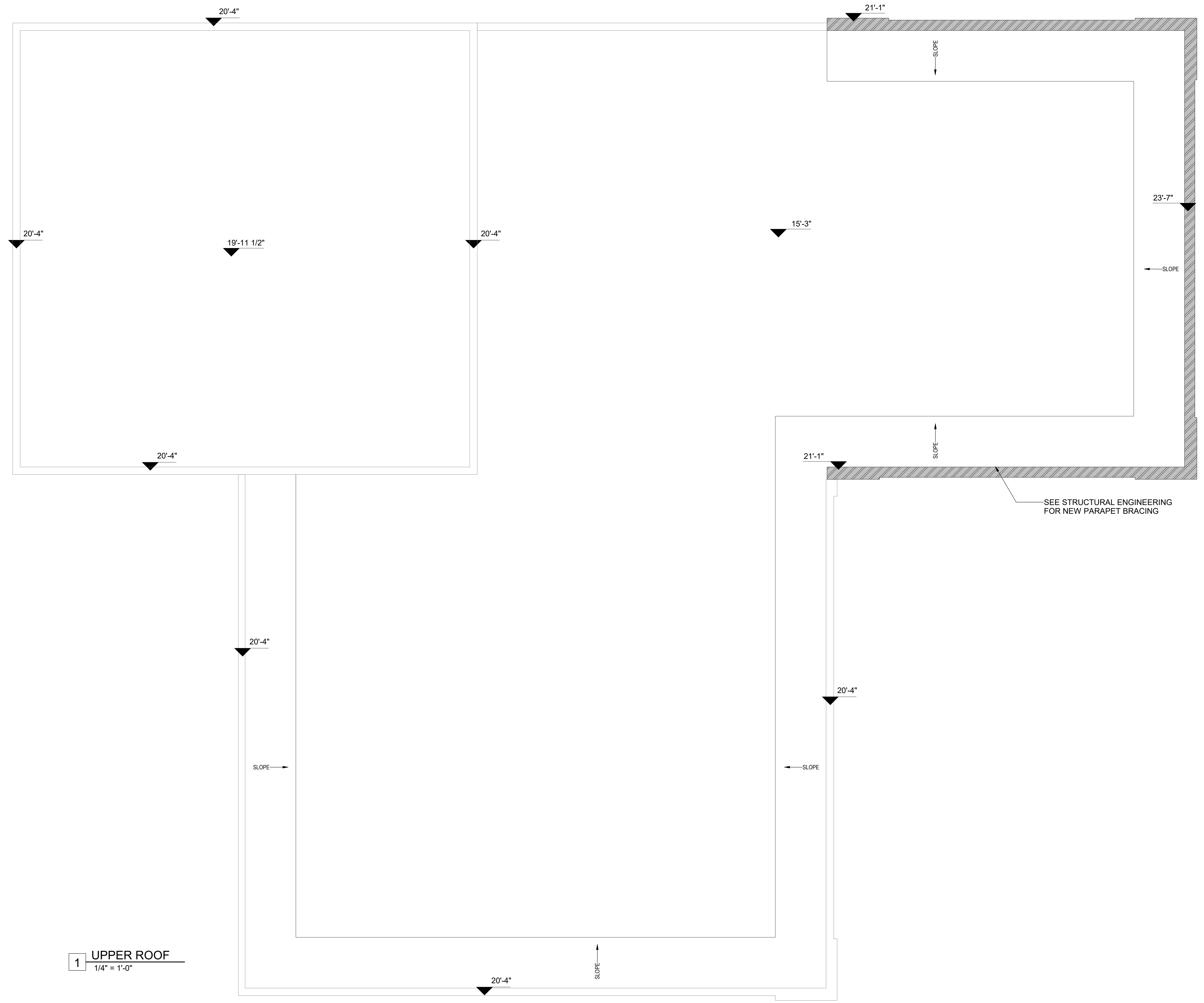
SHEET ID

A105

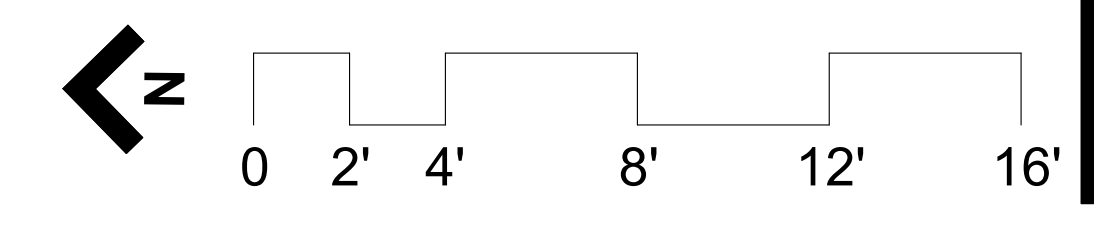
DATE

01/17/2021

 NEW 8'-4" SLOPING PARAPET.
 EXISTING PARAPET.



1 UPPER ROOF
1/4" = 1'-0"





WILLAMETTE ARCHITECTURE 360

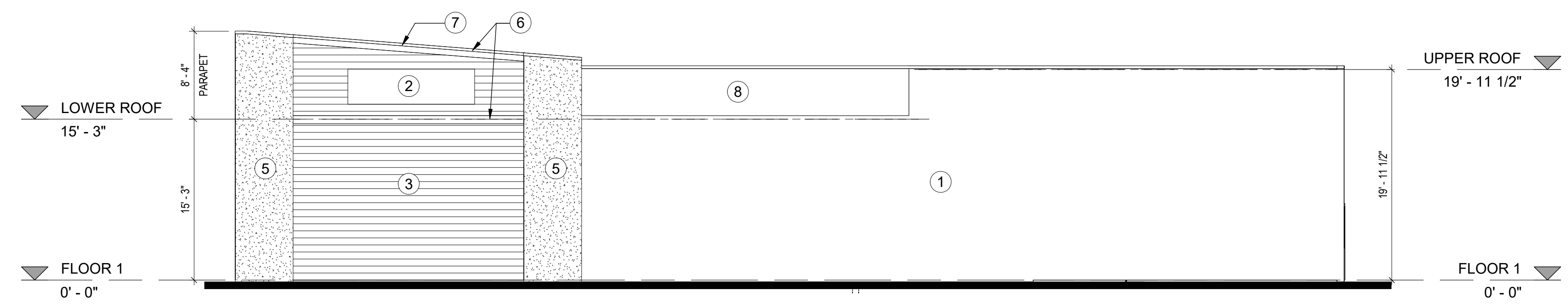
800 WILLAMETTE ST., SUITE 600
EUGENE, OR 97401
(541) 636-4365
WV360USA.COM

STAMP

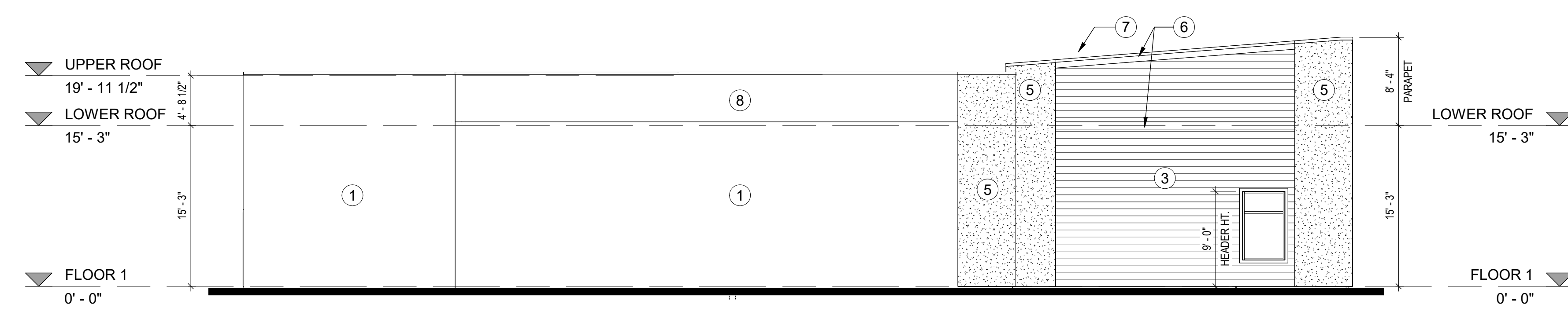
PROJECT NAME

ELEVATION NOTES

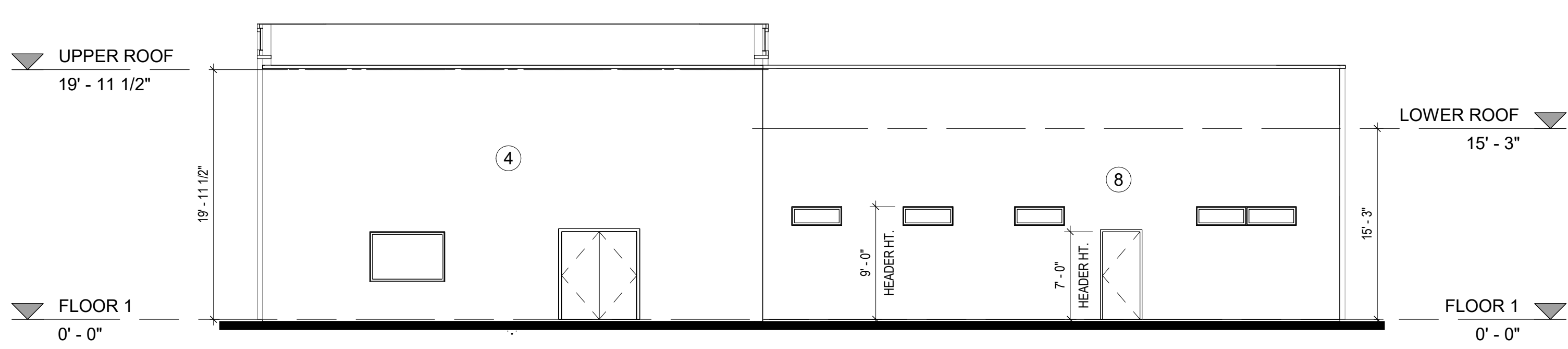
- 1. PAINTED EXISTING CONCRETE WALL
- 2. SIGN BY OTHERS
- 3. FIBER CEMENT HORIZONTAL LAP SIDING, 8" EXPOSURE
- 4. PAINTED EXISTING CMU WALL
- 5. STUCCO
- 6. 2X10 TRIM BAND
- 7. METAL PARAPET CAP
- 8. PAINTED FIBER CEMENT PANEL



1 EAST ELEVATION
1/8" = 1'-0"



4 WEST ELEVATION
1/8" = 1'-0"



2 NORTH ELEVATION
1/8" = 1'-0"



3 SOUTH ELEVATION
1/8" = 1'-0"

OPEN DOOR DENTAL
1100 N.E. E STREET
GRANTS PASS, OR 97526

REVISIONS

DRAWING TITLE

ELEVATIONS

SHEET ID

A201

DATE

01/17/2021

